

A RESUBDIVISION OF LOTS NO. 1 TO 37 INCL., AND THE VACATED STREET IN

June 7-1933
J. J. Morgan

PLYMOUTH
VIRGINIA PARK SUBDIVISION

OF PART OF THE N.E. 1/4 OF SECTION 27, T.15, R.8E.,
CITY OF PLYMOUTH,
WAYNE COUNTY, MICHIGAN.

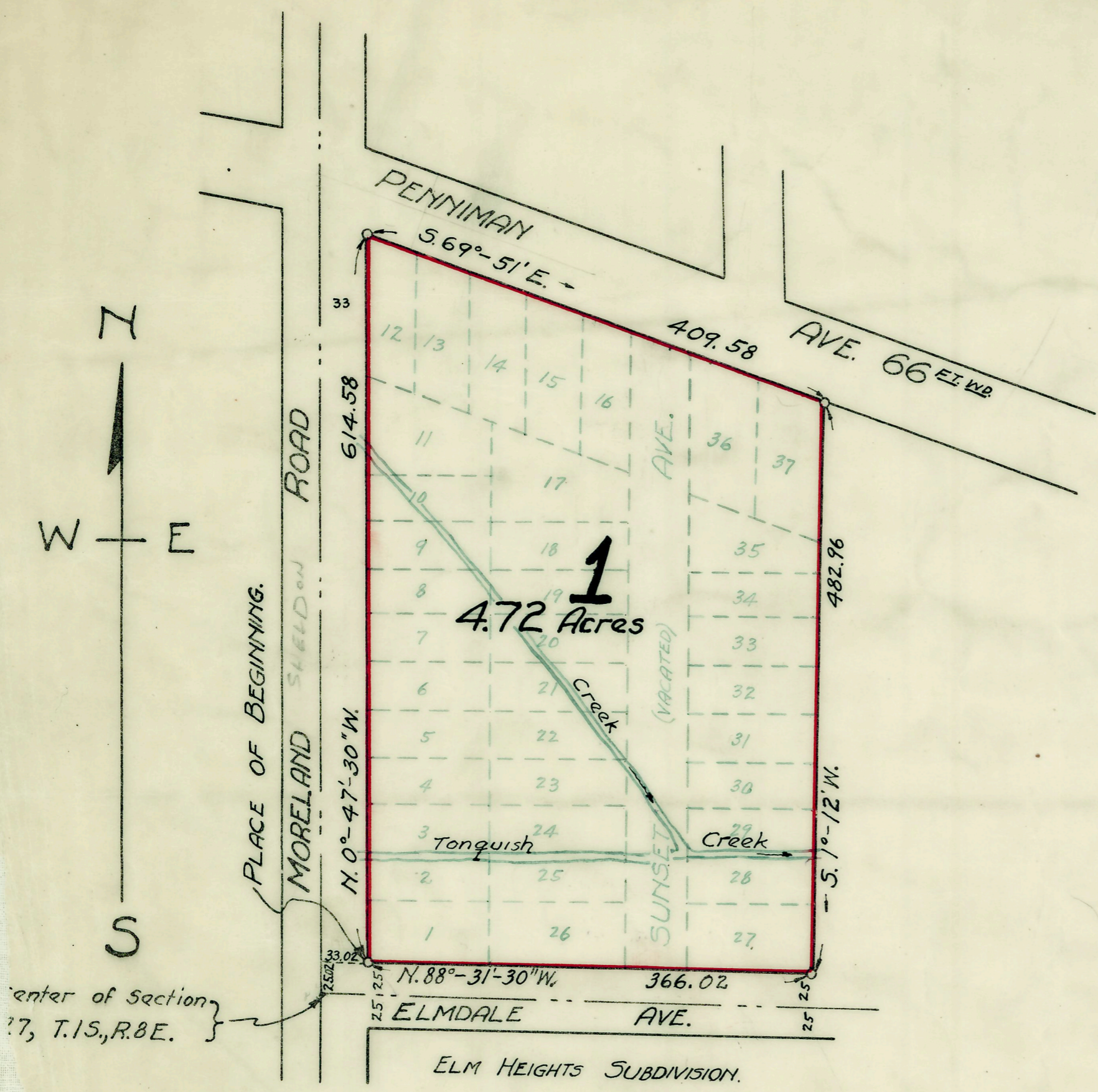
Scale: - 1" = 100'



Note: - All dimensions are given in feet and decimals thereof.

Maple
Plymouth Virginia Park Sub.
June 27th 1933
67th Plat
Harold E. Stoll
Notary Public

June 7-1933
J. J. Morgan
June 12-1933
J. J. Morgan



APPROVED BY THE BOARD OF COUNTY
AUDITORS OF WAYNE COUNTY MICH. THIS
31st day of June 1933
Chairman
C. P. Schneider

Wayne County Treasurer's Office
Detroit, Mich. 31st May 1933
I hereby certify that according to the Records of
this Office all Taxes for five years prior to the 26th
day of May 1933 are paid, and that there
are no Tax Lites or Titles held by the State or any
individual against the above described property.
Herbert R. Law
WAYNE COUNTY TREASURER

DEDICATION

KNOW ALL MEN BY THESE PRESENTS, That I,
Charles A. Fisher, a single man, as proprietor,
have caused the land embraced in the annexed
plat, to be surveyed, laid out and platted, to
be known as "A Resubdivision of Lots No. 1 to 37
incl. and the Vacated Street in PLYMOUTH
VIRGINIA PARK SUBDIVISION of Part of the N.E. 1/4
of Section 27, T.15, R.8E., City of Plymouth, Wayne
County, Michigan," and that the streets and
alleys shown on said plat are hereby dedicated
to the use of the public.

SIGNED AND SEALED
IN PRESENCE OF
Charles A. Fisher

STATE OF MICHIGAN }
COUNTY OF WAYNE } s.s.
On this 26th day of May, 1933,
before me, a Notary Public in and for said county,
personally came the above named Charles A.
Fisher, known to me to be the person who ex-
ecuted the above dedication, and acknowledged the same
to be his free act and deed.

DESCRIPTION

The land embraced in the annexed plat
of "A Resubdivision of Lots No. 1 to 37 incl., and
the Vacated Street in Plymouth Virginia Park
Subdivision of Part of the N.E. 1/4 of Section 27,
T.15, R.8E., City of Plymouth, Wayne County,
Michigan" is described as follows: - Beginning
at the intersection of the East line of Moreland
Road with the north line of Elmdale Avenue,
which point is distant N. 0°-47'-30" W. 25.02 feet
and S. 88°-31'-30" E. 33.02 feet from the center of
Section 27, T.15, R.8E., City of Plymouth, Wayne County,
Michigan, Running thence N. 0°-47'-30" W. along the east
line of Moreland Road 614.58 feet to the south line
of Penniman Avenue; thence S. 69°-51' E. on the south
line of said Penniman Avenue 409.58 feet; thence
S. 1°-12' W. 482.96 feet to the north line of Elmdale
Avenue; thence N. 88°-31'-30" W. on the north line of said
Elmdale Avenue 366.02 feet to the PLACE OF BEG-
INNING.

CERTIFICATE OF MUNICIPAL APPROVAL

This plat was approved by the Commission
of the City of Plymouth, Wayne County, Michigan,
at a meeting held MAY 15 1933.
L. P. [Signature]
Clerk.

ENGINEER'S CERTIFICATE

I hereby certify, that the plat hereon
delineated is a correct one, and that permanent
metal monuments of not less than one inch in
diameter and fifteen inches in length, set in a
concrete base not less than four inches in dia-
meter and forty-eight inches in depth have been
placed in the ground at all points marked thus
(o), as shown thereon, at all angles in the
boundaries of the land platted; at all inter-
sections of streets, of alleys, of streets and
alleys, and of streets and alleys with the
boundaries of the plat.
Harold E. Stoll
Registered Civil Engineer.

Notary Public, Wayne County, Michigan.
Commission expires: _____