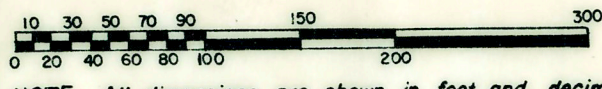


SHEET 1  
OF  
TWO SHEETS

# SYMAR SUB.

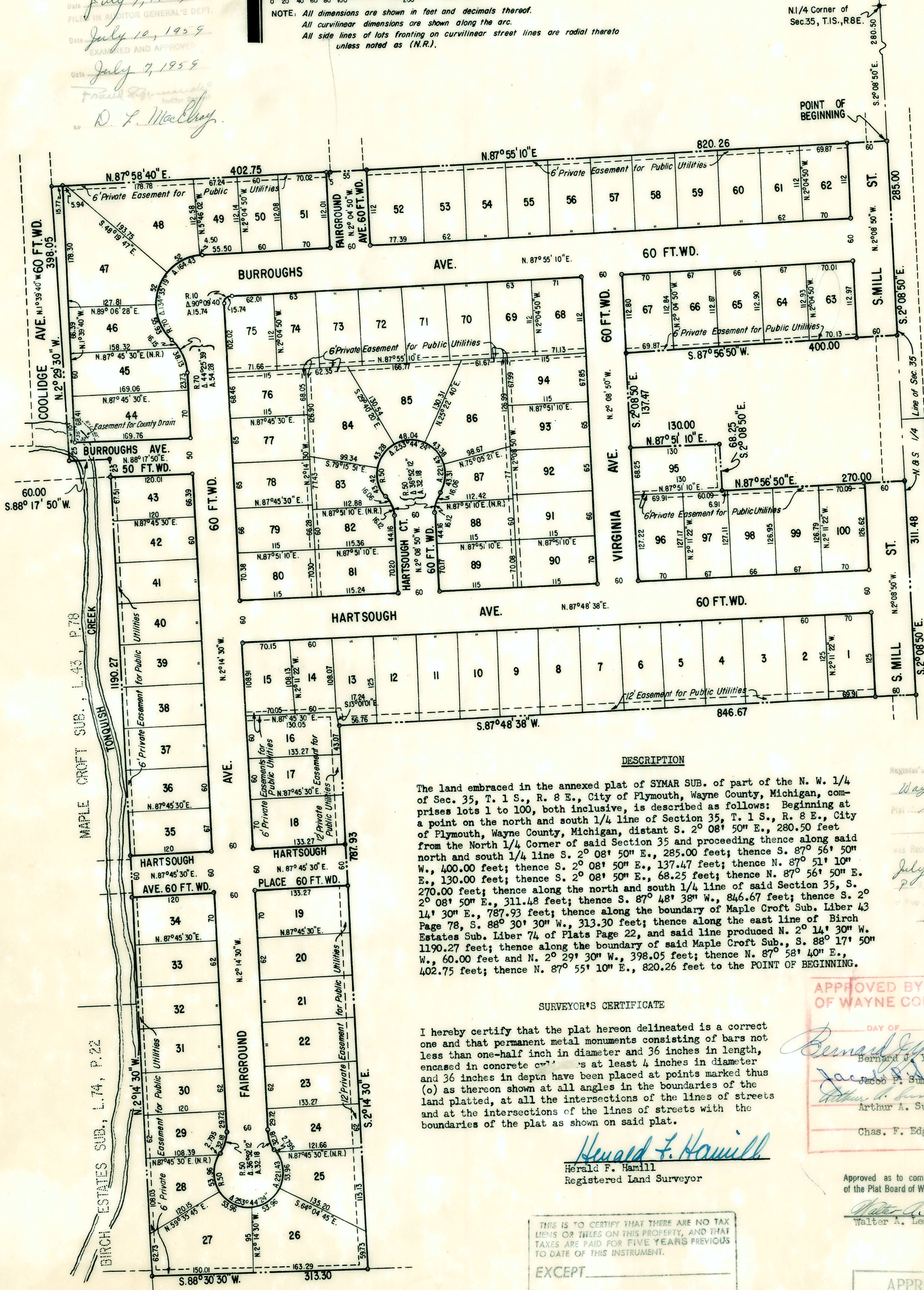
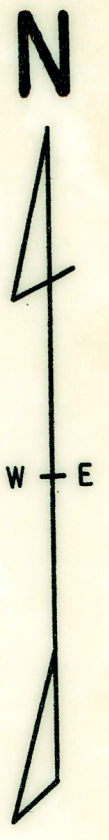
OF PART OF THE N.W. 1/4 OF SEC. 35, T.1S., R.8E.,  
CITY OF PLYMOUTH, WAYNE COUNTY, MICHIGAN

SCALE: ONE INCH = 100 FT.



NOTE: All dimensions are shown in feet and decimals thereof.  
All curvilinear dimensions are shown along the arc.  
All side lines of lots fronting on curvilinear street lines are radial thereto unless noted as (N.R.).

July 7, 1959  
FILED IN REGISTER GENERAL'S DEPT.  
July 10, 1959  
EXAMINED AND APPROVED  
July 7, 1959  
D. L. MacClay



ASSESSOR'S  
PLYMOUTH  
PLAT NO. 24  
L.69, P.48

### DESCRIPTION

The land embraced in the annexed plat of SYMAR SUB. of part of the N. W. 1/4 of Sec. 35, T. 1 S., R. 8 E., City of Plymouth, Wayne County, Michigan, comprises lots 1 to 100, both inclusive, is described as follows: Beginning at a point on the north and south 1/4 line of Section 35, T. 1 S., R. 8 E., City of Plymouth, Wayne County, Michigan, distant S. 2° 08' 50" E., 280.50 feet from the North 1/4 Corner of said Section 35 and proceeding thence along said north and south 1/4 line S. 2° 08' 50" E., 285.00 feet; thence S. 87° 56' 50" E., 400.00 feet; thence S. 2° 08' 50" E., 137.47 feet; thence N. 87° 51' 10" E., 130.00 feet; thence S. 2° 08' 50" E., 68.25 feet; thence N. 87° 56' 50" E., 270.00 feet; thence along the north and south 1/4 line of said Section 35, S. 2° 08' 50" E., 311.48 feet; thence S. 87° 48' 38" W., 846.67 feet; thence S. 2° 14' 30" E., 787.93 feet; thence along the boundary of Maple Croft Sub. Liber 43 Page 78, S. 88° 30' 30" W., 313.30 feet; thence along the east line of Birch Estates Sub. Liber 74 of Plats Page 22, and said line produced N. 2° 14' 30" W. 1190.27 feet; thence along the boundary of said Maple Croft Sub., S. 88° 17' 50" W., 60.00 feet and N. 2° 29' 30" W., 398.05 feet; thence N. 87° 58' 40" E., 402.75 feet; thence N. 87° 55' 10" E., 820.26 feet to the POINT OF BEGINNING.

### SURVEYOR'S CERTIFICATE

I hereby certify that the plat hereon delineated is a correct one and that permanent metal monuments consisting of bars not less than one-half inch in diameter and 36 inches in length, encased in concrete curbs at least 4 inches in diameter and 36 inches in depth have been placed at points marked thus (o) as thereon shown at all angles in the boundaries of the land platted, at all the intersections of the lines of streets and at the intersections of the lines of streets with the boundaries of the plat as shown on said plat.

*Herald F. Hamill*  
Herald F. Hamill  
Registered Land Surveyor

APPROVED BY THE PLAT BOARD OF WAYNE COUNTY, MICH. THIS  
DAY OF JUL - 7 1959  
*Bernard J. Youngblood* Chairman  
*Arthur A. Sumeracki* Vice-Chairman  
Chas. F. Edgecomb Secretary

Approved as to compliance with all plat regulations of the Plat Board of Wayne Co. Mich. July 2, 1959  
*Walter A. Lestick*  
Walter A. Lestick County Plat Engineer

THIS IS TO CERTIFY THAT THERE ARE NO TAX LIENS OR TAXES ON THIS PROPERTY, AND THAT TAXES ARE PAID FOR FIVE YEARS PREVIOUS TO DATE OF THIS INSTRUMENT.

EXCEPT  
*Harold E. Still* Wayne County Treas.  
DATE 6/29 1959 BY *C. S. Finley*

APPROVED BY THE  
BOARD OF COUNTY ROAD COMMISSIONERS  
OF THE COUNTY OF WAYNE, MICHIGAN  
*Charles L. Wilton* Chairman  
DATE July 2, 1959

MAPLE CROFT SUB.  
L.43, P.78