

May 15 1920  
L. L. Haines

# SUNSET ADDITION

SUBDIVISION OF PART OF NE 1/4 OF SEC. 27 T. 15 R. 5 E.

## PLYMOUTH VILLAGE WAYNE CO. MICH.

SCALE 200' = 1"

Oliver Goldsmith  
and Lena Goldsmith his wife as proprietors

Sunset Addition, Subdivision of part of NE 1/4 of Sec. 27 T. 15 R. 5 E. Wayne Co. Mich. All dimensions are in feet and decimals.

Witnessed and sealed in presence of  
L. J. Passage  
E. H. Passage

Oliver Goldsmith  
Lena Goldsmith

Wayne Mich. On the 12th day of Feb. 1920

Oliver Goldsmith and Lena Goldsmith his wife

Ernest H. Passage

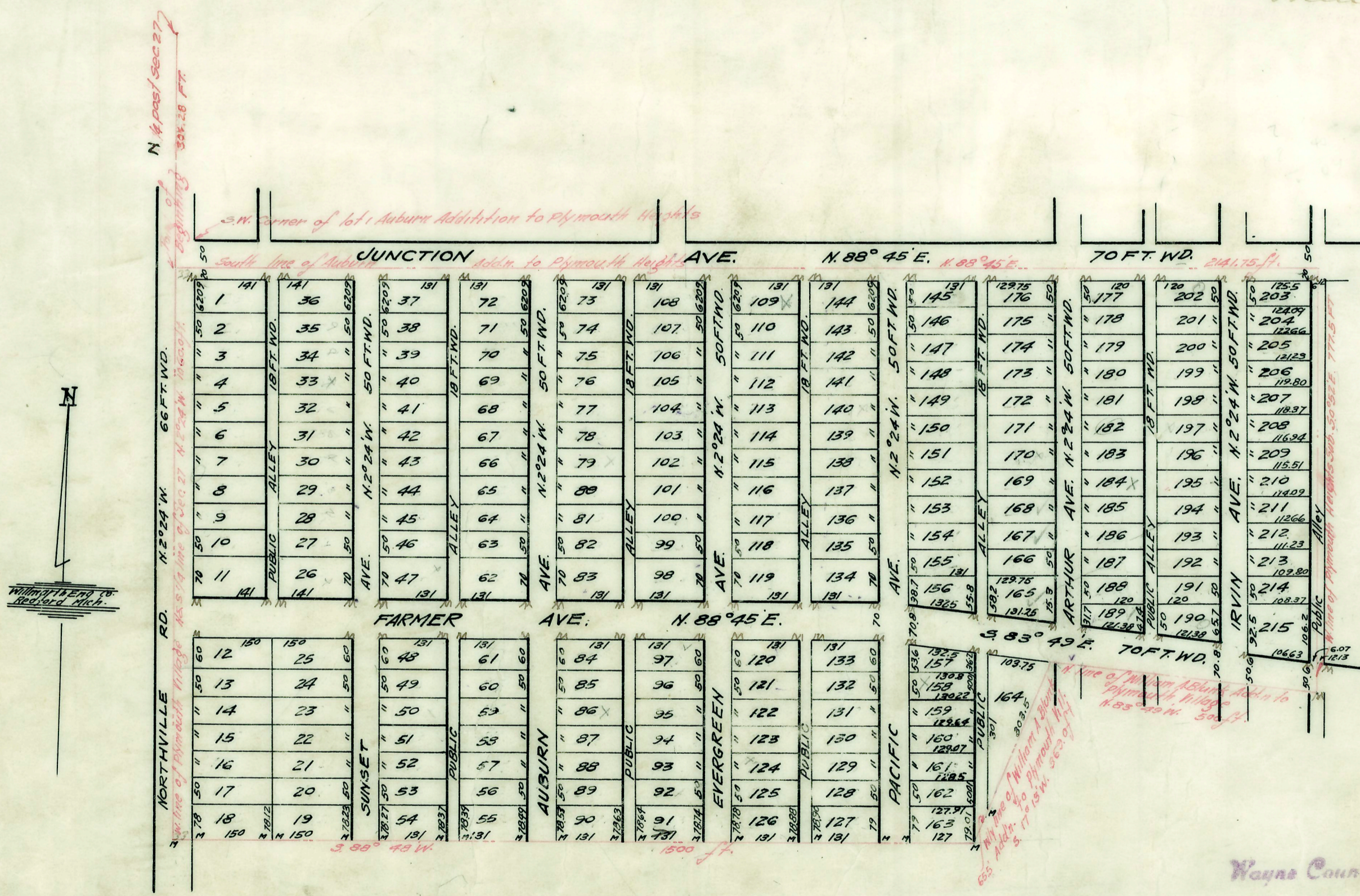
Notary Public, Wayne Co., Mich.  
Nov 12 1920

Commission  
Village of Plymouth  
October 9, 1919  
D. L. Brown, Clerk

**DESCRIPTION**  
The land embraced in the annexed plat of SUNSET ADDITION SUBDIVISION OF PART OF NE 1/4 OF SEC. 27 T. 15 R. 5 E. PLYMOUTH VILLAGE, WAYNE CO. MICH. is described as follows: Beginning on the N 1/2 1/4 line distant 32.924 E. 304.28 ft. from the N 1/4 post of Sec. 27 by the West. cor. of Auburn Add. to Plymouth Heights part of Sec's 22 & 27 T. 15 R. 5 E. as rec. in lib. 31 page 58 of plats Wayne Rec. Thence along South line of said sub. N. 88° 45' E. 214.75 ft. to a point thence S. 0° 52' E. 772.50 ft. to a point thence N. 85° 49' W. 500 ft. to a point thence S. 17° 13' W. 369.0 ft. to a point thence S. 88° 48' W. 1500.0 ft. to a point on the N. 1/2 S. 1/4 line of Sec. 27 thence along the N. 1/2 S. 1/4 line of Sec. 27. N. 2° 29' W. 1060.0 ft. to the point of Beginning.

Wayne County  
Sunset Addition  
18"  
May 20 10 1/2  
42 Plats  
Colts Stall

May 18-1920  
L. L. Haines  
May 18-1920  
L. L. Haines



Wayne County Treasurer's Office  
Detroit, Mich. 21st April 1920

I hereby certify that according to the Records of this Office all Taxes for the year prior to the 12th day of Feb. 1920 are paid, and that there are no Tax Liens of Taxes due to the State or any subdivision against the above described property.

30th April  
J. J. Estman  
Wm. J. Mueller

Wayne County Treasurer