

PARKSIDE GARDENS

A Subdivision of Part of the West $\frac{1}{2}$ of the Southeast $\frac{1}{4}$ of Section 26, T.15, R.8E., Meridian of Michigan.

Village of Plymouth,
Wayne County, Michigan.

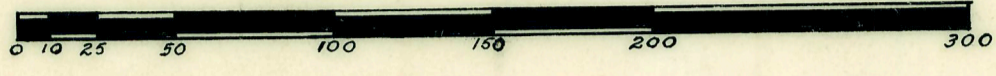
Scale: -1"=60'

Examined and Approved
Oct 16-1926
L. H. Hume

Wayne
Parkside Gardens
18"
26 7 15
61 Plat
66
Alto Stall

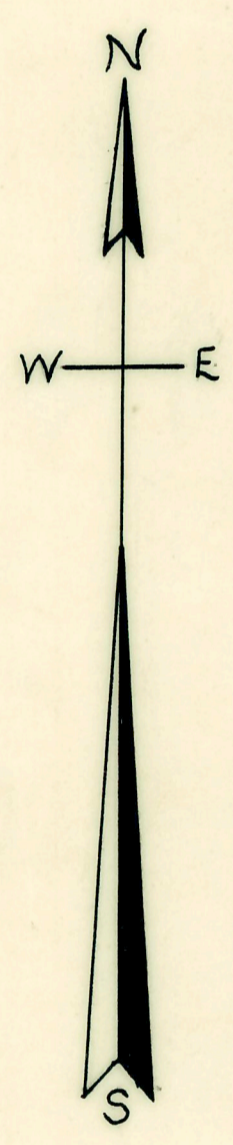
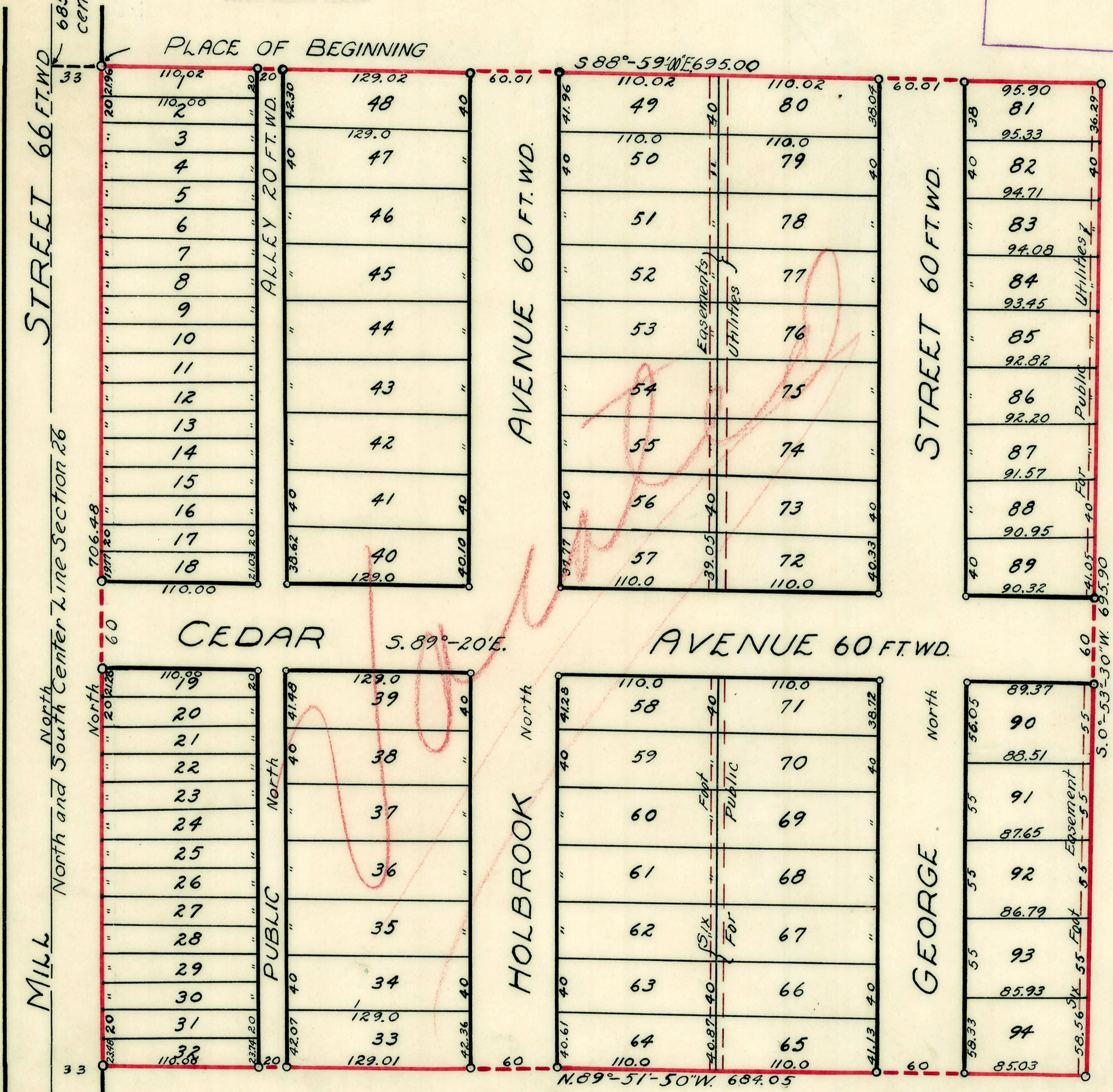
Oct 16-1926
L. H. Hume

Oct 20-1926
L. H. Hume



This plat was approved by the Commission of the Village of Plymouth, Michigan, at a meeting held August 2, 1926. ...
Sidney D. Strong
Village Clerk

NOTE: - All dimensions are given in feet and decimals thereof.



APPROVED BY THE BOARD OF COUNTY AUDITORS OF WAYNE COUNTY MICH. THIS 12 DAY OF Oct 1926
CHAIRMAN
Jm Gutman
W. H. Green

KNOW ALL MEN BY THESE PRESENTS: that we, Edward D. Smith, Retta Smith, David H. Appelhof, Edith Appelhof, Ernest R. Graboske, Mabel B. Graboske, Edward H. Burlage, and Katherine S. Burlage, his wife, as proprietors, have caused the land embraced in the annexed plat to be surveyed, laid out and platted, to be known as the "PARKSIDE GARDENS," a subdivision of part of the West $\frac{1}{2}$ of the Southeast $\frac{1}{4}$ of Section 26, T.15, R.8E., Meridian of Michigan, Village of Plymouth, Wayne County, Michigan, and that the streets, easements and alleys shown on said plat are hereby dedicated to the use of the public.

SIGNED AND SEALED IN PRESENCE OF
WITNESSES:
M.B. Henry } Edward D. Smith (L.S.)
Wm Westfall } Retta Smith (L.S.)
Edith Appelhof (L.S.)
Ernest R. Graboske (L.S.)
Mabel B. Graboske (L.S.)
Edward H. Burlage (L.S.)
Katherine S. Burlage (L.S.)

STATE OF MICHIGAN } S.S.
COUNTY OF Wayne }
On this 30th day of July 1926, before me, a Notary Public, personally came the above named Edward D. Smith, Retta Smith, David H. Appelhof, Edith Appelhof, Ernest R. Graboske, Mabel B. Graboske, Edward H. Burlage, and Katherine S. Burlage, known to me to be the person... who executed the above dedication and acknowledged the same to be their free act and deed.
Margaret B. Henry
Notary Public, in and for Wayne Co., Michigan.
My commission expires April 11, 1928.

Wayne County Treasurer's Office
Detroit, Mich. 2nd August 1926
I hereby certify that according to the Records of this Office all Taxes for five years prior to the 30th day of July 1926 are paid, and that there are no Tax Liens or Titles held by the State or any individual against the above described property.
David Gordon Dep
WAYNE COUNTY TREASURER

I hereby certify that the plat hereon delineated is a correct one and that permanent metal monuments of not less than one inch in diameter and fifteen inches in length set in concrete bases at least four inches in diameter and forty-eight inches in depth have been placed at points marked thus (a) as thereon shown at all angles in the boundaries of the land platted, at all the intersections of streets, intersections of alleys, or of streets and alleys, and at the intersections of streets and alleys with the boundaries of the plat.
Herald F. Hamill
Registered Civil Engineer

DESCRIPTION
The land embraced in the annexed plat "PARKSIDE GARDENS," a subdivision of Part of the West $\frac{1}{2}$ of the Southeast $\frac{1}{4}$ of Section 26, T.15, R.8E., Meridian of Michigan, Village of Plymouth, Wayne County, Michigan, is described as follows: - Beginning at point in the East line of Mill Street, 685.5 feet South and S.88°-59'-00"E. 33.0 feet from the center post of Section 26, T.15, R.8E., Thence continuing S.88°-59'-00"E. 695.00 feet, thence S.0°-53'-30"W. 695.90 feet, thence N.89°-51'-50"W. 684.05 feet to the East line of Mill Street, thence North along the East line of Mill Street 706.48 feet to the PLACE OF BEGINNING.

Part side boundaries

ed by order of Circuit Court
1926