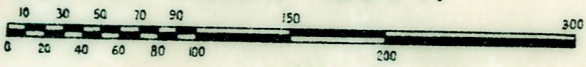


AUG 1 1956

PARKLANE SUBDIVISION

OF PART OF THE N.E. 1/4 OF SECTION 34, T.1S., R.8E., CITY OF PLYMOUTH, WAYNE COUNTY, MICHIGAN

SCALE: 1/4 INCH = 100 FT.



NOTE: All dimensions are shown in feet and decimals thereof.
All curvilinear dimensions are shown along the arc.

Register's Office
Wayne County, Mich.
Plot of Parklane Subdivision
City of Plymouth

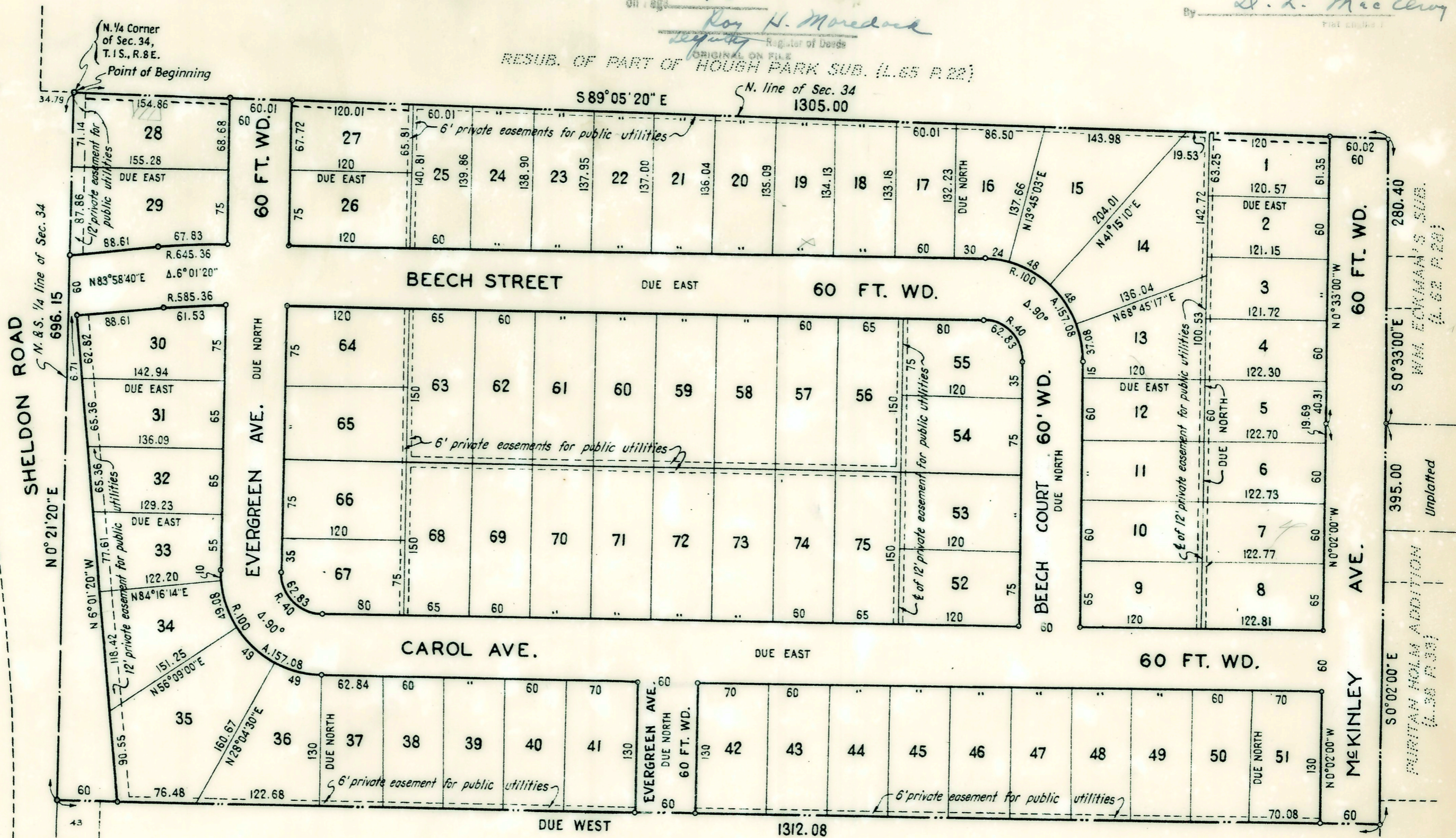
was Recorded this 2nd day of
August A.D., 1956 at 10:26
A.M. in Liber. 79 of Plat
on page 70
by Roy H. Mordant
Register of Deeds

HERALD F. HAMILL
Reg. Civil Engineer & Land Surveyor
PLYMOUTH, MICHIGAN.

I hereby certify this copy is a true copy of map or plat forwarded the Register of deeds for recording.

Date August 1, 1956
FILED IN AUDITOR GENERAL'S DEPT.
Date August 9, 1956
EXAMINED AND APPROVED
Date August 1, 1956
Auditor General
By S. L. Mac Cleary

RESUB. OF PART OF HOUGH PARK SUB. (L.65 P.22)



DEDICATION

KNOW ALL MEN BY THESE PRESENTS, That we, Walter W. Hammond Jr. and Eleanor M. Hammond, his wife, and Albert Simkins and Clara Simkins, his wife, and William Rothenberg and Helen Rothenberg, his wife, as proprietors, have caused the land embraced in the annexed plat to be surveyed, laid out and platted, to be known as "Parklane Subdivision of part of the N. E. 1/4 of Section 34, T.1S., R.8E., City of Plymouth, Wayne County, Michigan", and that the streets as shown on said plat are hereby dedicated to the use of the public, and that the private easements as shown on said plat are hereby reserved for the use of Public Utilities, and that no permanent structures are to be erected within the lines of said easements.

Witnesses:

Elizabeth S. Cutler
Elizabeth S. Cutler
J. Rusing Cutler
Walter W. Hammond Jr.
Walter W. Hammond Jr.
Eleanor M. Hammond
Eleanor M. Hammond
Albert Simkins
Clara Simkins
Clara Simkins
William Rothenberg
William Rothenberg
Helen Rothenberg
Helen Rothenberg

Approved as to compliance with all plat regulations of the Plat Board of Wayne Co. Mich. July 26, 1956.
Walter A. Lesnick
Walter A. Lesnick County Plat Engineer

APPROVED BY THE PLAT BOARD OF WAYNE COUNTY, MICH. THIS

DAY OF JUL 31 1956 19

Bernard J. Youngblood
Bernard J. Youngblood CHAIRMAN
Arthur A. Sumaracki
Chas. F. Edgecomb
Jacob P. Sumaracki

DESCRIPTION

The land embraced in the annexed plat of Parklane Subdivision of part of the N.E. 1/4 of Section 34, T.1S., R.8E., City of Plymouth, Wayne County, Michigan, comprises lots 1 to 75, inclusive, and is described as follows: Beginning at the N. 1/4 Corner of Section 34, T.1S., R.8E., and proceeding thence along the North line of said Section, S 89°05'20"E 1305.00 feet; thence along the west line of Wm. Eckman's Sub., L.62 - P. 28, S 0°33'00"E 280.40 feet; thence along the west line of Puritan Home Addition, L.38 - P.33, including its extension northerly, S 0°02'00"E 395.00 feet; thence Due West 1312.08 feet; thence along the N. and S. 1/4 line of said Section, N 0°21'20"E 696.15 feet to the point of beginning.

SURVEYOR'S CERTIFICATE

I hereby certify that the plat hereon delineated is a correct one, and that permanent monuments consisting of metal rods not less than one half inch in diameter and 36 inches in length, encased in concrete cylinders 4 inches in diameter and 36 inches in length, have been set at points marked thus (o) as thereon shown at all angles in the boundaries of the land platted, at all intersections of the lines of streets, and at intersections of the lines of streets with the boundaries of the plat.

Herald F. Hamill
Herald F. Hamill
Registered Land Surveyor

CERTIFICATE OF MUNICIPAL APPROVAL

I hereby certify that this plat was approved by the City Commission of the City of Plymouth at a meeting held March 5, 1956, and that the width of lots is in compliance with requirements of Section 30, Act 172 of 1929 as amended.

Kenneth E. Way
Kenneth E. Way, Clerk

CITY PLANNING COMMISSION APPROVAL

This plat was approved by the Planning Commission of the City of Plymouth at a meeting held February 16, 1956.

Sidney D. Strong
Sidney D. Strong, Chairman

ACKNOWLEDGMENT

STATE OF MICHIGAN)
COUNTY OF WAYNE) SS.

On this 1st day of February, 1956, before me, a Notary Public in and for said County, personally came the above named Walter W. Hammond Jr. and Eleanor M. Hammond, his wife, Albert Simkins and Clara Simkins, his wife, and William Rothenberg and Helen Rothenberg, his wife, known to me to be the persons who executed the above dedication and acknowledged the same to be their free act and deed.

My Commission expires

July 19, 1957

J. Rusing Cutler
Notary Public, Wayne County

APPROVED BY THE
BOARD OF COUNTY ROAD COMMISSIONERS
OF THE COUNTY OF WAYNE, MICHIGAN
MICHAEL J. O'BRIEN
CHAIRMAN
July 26, 1956

PARKLANE SUB.