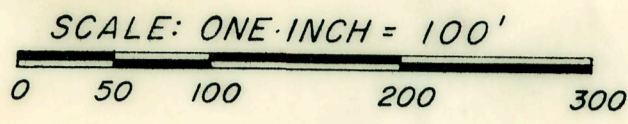


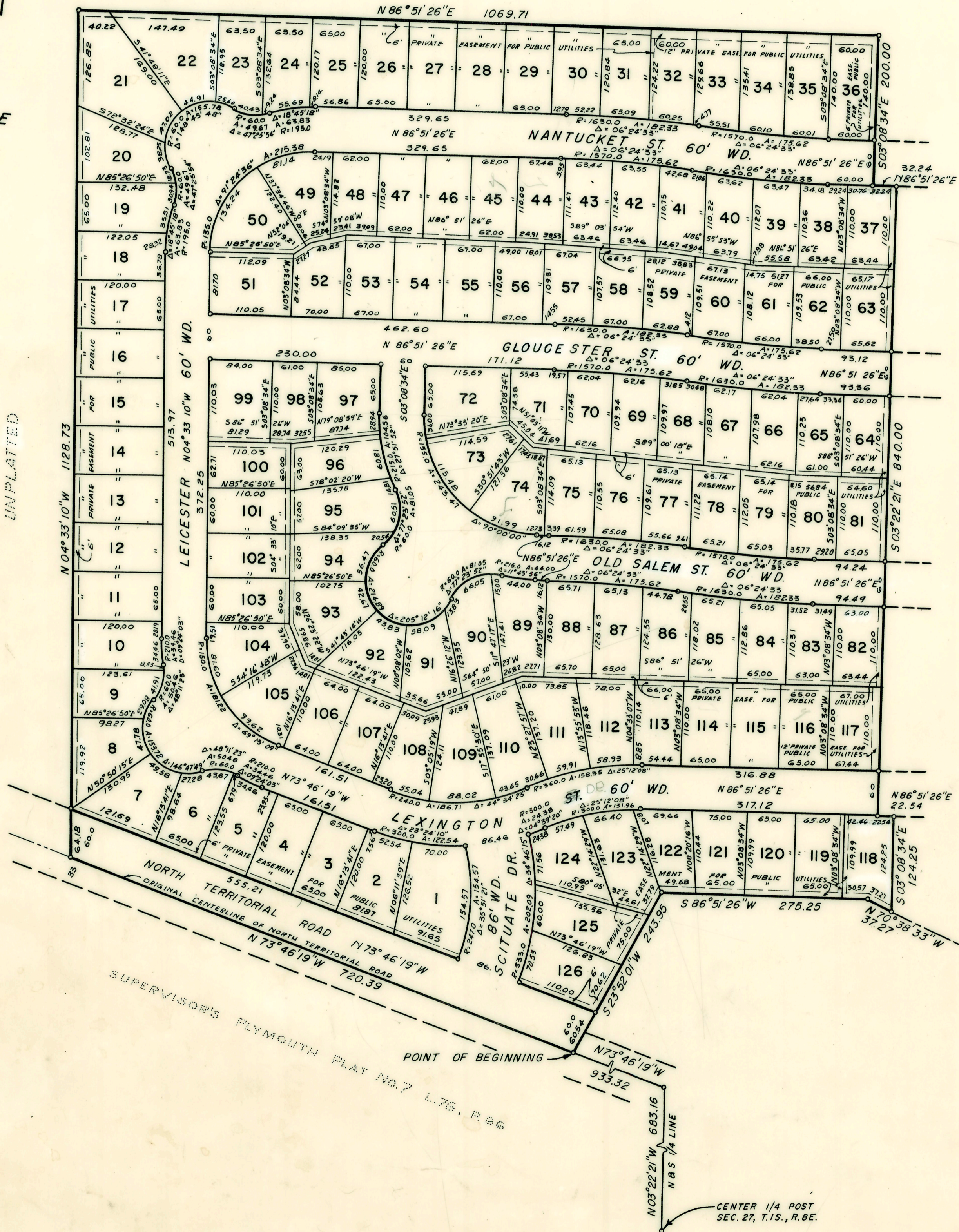
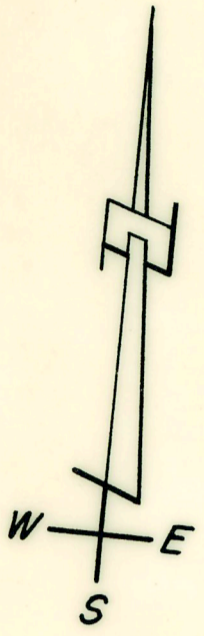
NEW ENGLAND VILLAGE SUBDIVISION

PART OF THE N.W. 1/4 OF SECTION 27, T.15., R.8E., CITY OF PLYMOUTH, WAYNE COUNTY MICHIGAN



ALL DIMENSIONS ARE SHOWN IN FEET AND DECIMALS THEREOF
ALL CURVILINEAR DIMENSIONS ARE SHOWN ALONG THE ARC

UNPLATTED



UNPLATTED

MASSERMAN SPRINGDALE SUB. L. 681, P. 62

NEW ENGLAND VILLAGE SUBDIVISION