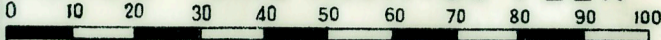


SIDNEY DAVIS STRONG,
Registered Civil Engineer
and Land Surveyor,
1251 William St.,
Plymouth, Mich.

LEE-SHERIDAN SUBDIVISION

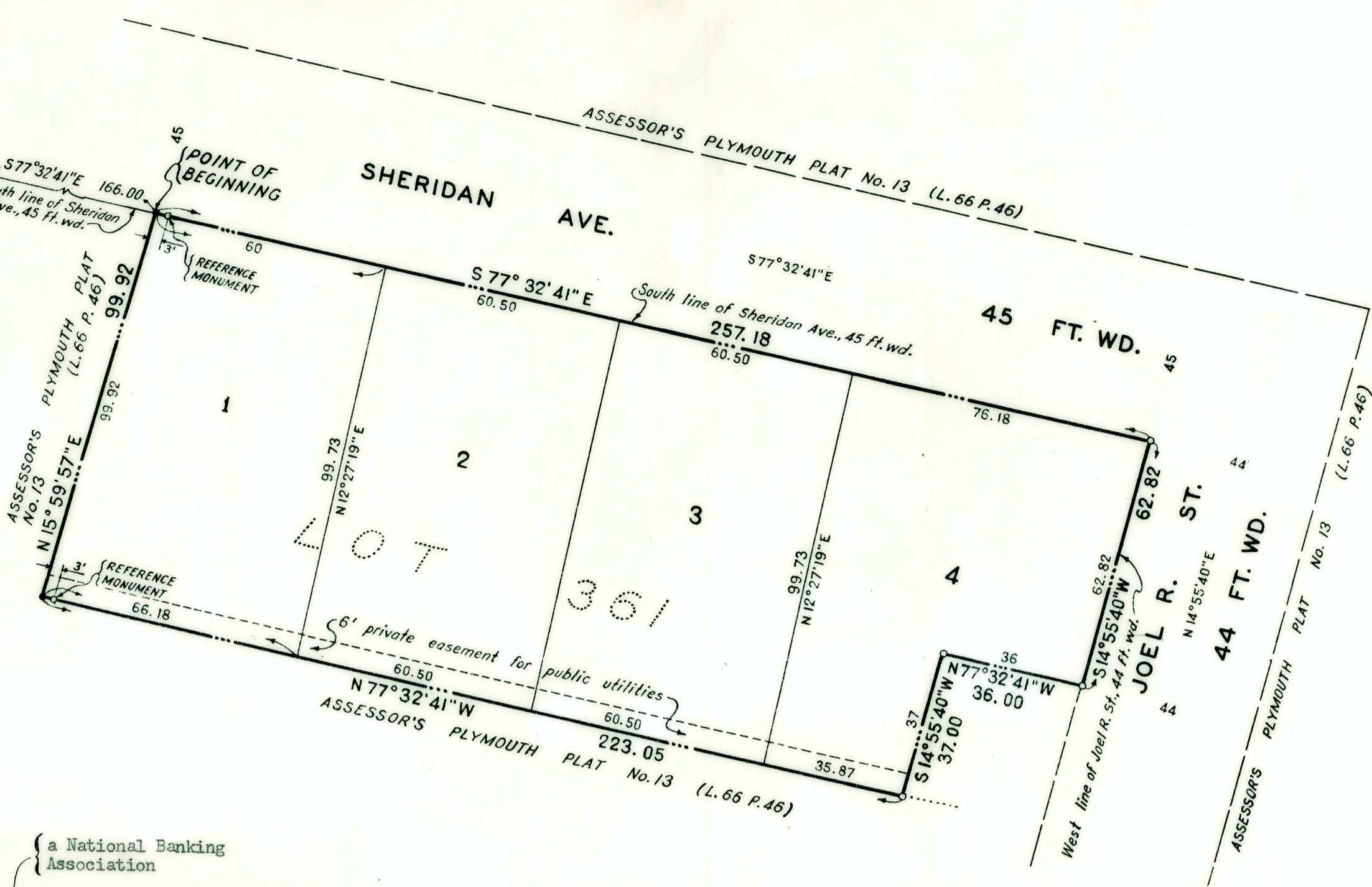
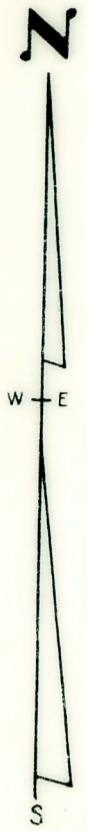
OF PART OF THE S.E. 1/4 OF SEC. 27, T.1 S., R.8 E.,
CITY OF PLYMOUTH, WAYNE CO., MICH.

SCALE: ~ONE INCH=30 FEET.



NOTE: All dimensions are shown in feet and decimals thereof.

East and West 1/4 line
of Sec. 27
N88°41'E 1337.60
Center 1/4 cor.
of Sec. 27,
T.1 S., R.8 E.
607.39
S2°52'E



DEDICATION: KNOW ALL MEN BY THESE PRESENTS, that we, Grace E. Jolliffe, as proprietor, Finch L. Roberts and Rosemary L. Roberts his wife, as proprietors, and The National Bank of Detroit, by Floyd A. Kehrl, vice-president and Harry Larsen, assistant vice-president, as mortgagee, have caused the land embraced in the annexed plat to be surveyed, laid out and platted to be known as "Lee-Sheridan Subdivision of Part of the S.E. 1/4 of Sec. 27, T.1 S., R.8 E., City of Plymouth, Wayne Co., Mich." and that the private easement indicated on said plat is hereby reserved for the use of public utilities and no permanent structures are to be erected within the lines of said easement.

Signed in the presence of
WITNESSES
Elizabeth S. Cutler
Gloria M. Hansford

Grace E. Jolliffe
Finch L. Roberts
Rosemary L. Roberts
National Bank of Detroit, By
Floyd A. Kehrl, Vice-president
Harry Larsen, Assistant Vice-president

DESCRIPTION: - The land embraced in the annexed plat of Lee-Sheridan Subdivision of Part of the S.E. 1/4 of Sec. 27, T.1 S., R.8 E., City of Plymouth, Wayne Co., Mich., being a resubdivision of part of Lot 361 of Assessor's Plymouth Plat No. 13 as recorded in Liber 66, Page 46 of Plats, comprises Lots 1 to 4, both inclusive, and is described as follows: Beginning at a point on the south line of Sheridan Avenue, 45 feet wide, distant N.88°41'E, 1337.6 feet along the east and west quarter line of said section and S.2°52'E, 607.39 feet and S.77°32'41"E, 166.00 feet from the center of said Section 27; Running thence along the south line of Sheridan Avenue, 45 feet wide, S.77°32'41"E, 257.18 feet; Thence S.14°55'40"W, 62.82 feet along the west line of Joel R. Street, 44 feet wide; Thence N.77°32'41"W, 36.00 feet; Thence S.14°55'40"W, 37.00 feet; Thence N.77°32'41"W, 223.05 feet; Thence N.15°59'15"E, 99.92 feet to the point of beginning.

CERTIFICATE OF PLANNING COMMISSION APPROVAL: - This plat was approved by the Planning Commission of the City of Plymouth at a meeting held May 6, 1959
Carroll L. Porter, Acting Chairman

CERTIFICATE OF MUNICIPAL APPROVAL: - This plat was approved by the City Commission of the City of Plymouth at a meeting held May 6, 1959, and I hereby certify that the widths of lots are in compliance with requirements of Sec. 30, Act 172, of 1929, as amended.
Kenneth E. Way, City Clerk

SURVEYOR'S CERTIFICATE: - I hereby certify that the plat hereon delineated is a correct one, and that permanent metal monuments consisting of bars not less than one half inch in diameter and 36 inches in length, encased in concrete cylinders at least 4 inches in diameter and 36 inches in depth have been placed at all points marked thus (o) as hereon shown at all angles in the boundaries of the land platted, at all intersections of lines of streets and at all intersections of lines of streets with the boundaries of the plat, except at points marked thus (a).
Sidney Davis Strong, Registered Civil Engineer and Land Surveyor.

ACKNOWLEDGMENT
STATE OF MICHIGAN)
County of Wayne) ss.
On this 30th day of April, A.D. 1959, before me Elizabeth S. Cutler a Notary Public in and for said county, appeared grace E. Jolliffe, Finch L. Roberts, Rosemary L. Roberts known to me to be the persons who executed the above dedication and acknowledged the same to be their free act and deed.
Elizabeth S. Cutler, Notary Public, Wayne County
My Commission expires April 2, 1962

ACKNOWLEDGMENT
STATE OF MICHIGAN)
County of Wayne) ss.
On this 30th day of April, A.D. 1959, before me Elizabeth S. Cutler a Notary Public in and for said county, appeared Floyd A. Kehrl and Harry Larsen to me personally known, who being each by me duly sworn, did say that they are Vice-president and Assistant Vice-president, respectively, of the National Bank of Detroit, a National Banking Association and that said instrument was signed in behalf of said Association by authority of its Board of Directors and the said Floyd A. Kehrl and Harry Larsen acknowledged said instrument to be the free act and deed of said Association.
Elizabeth S. Cutler, Notary Public, Wayne County
My Commission expires April 2, 1962

I hereby certify this copy is a true copy of map or plat forwarded the Register of Deeds to recording.
Date May 11, 1959
FILED IN AUDITOR GENERAL'S DEPT.
Date May 20, 1959
EXAMINED AND APPROVED
Date May 18, 1959
Paul Szymanski, Auditor General
D. L. MacEwan, Plat Engineer

APPROVED BY THE PLAT BOARD OF WAYNE COUNTY, MICH. THIS MAY 14 1959
Bernard J. Youngblood, CHAIRMAN, Register of Deeds
Jacob P. Sumeracki, Chairman, Board of County Auditors
Arthur A. Sumeracki, Vice Chairman Board of County Auditors
Chas. F. Edgecomb, Secretary, Board of County Auditors

COPY
Register's Office
Wayne County, Mich.
Plat of Lee-Sheridan Subdivision
was Recorded this 17th day of May A.D., 1959 at 11:00 o'clock A.M. in Liber 82 of Plats on Page 76
Bernard J. Youngblood, Register of Deeds
ORIGINAL ON FILE

Approved as to compliance with all plat regulations of the Plat Board of Wayne Co., Mich. May 11, 1959
Walter A. Lesnick, County Plat Engineer

THIS IS TO CERTIFY THAT THERE ARE NO TAX LIENS OR TAXES ON THIS PROPERTY, AND THAT TAXES ARE PAID FOR FIVE YEARS PREVIOUS TO DATE OF THIS INSTRUMENT.
EXCEPT
Harold E. Still, Wayne County Treas.
MAY - 5 1959 BY C. S. FINNEY

LEE-SHERIDAN