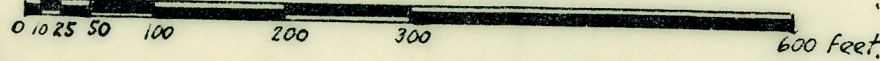


# A RESUBDIVISION OF LOTS 1 TO 13 INCL., 53 TO 141 INCL., AND 170 TO 185 INCL., AND THE VACATED STREETS IN

# HOUGH PARK SUBDIVISION

IN THE W. 1/2 OF THE SE. 1/4 OF SEC. 27, T. 1 S., R. 8 E., CITY OF PLYMOUTH, WAYNE CO., MICH.

Scale: - 1" = 150'

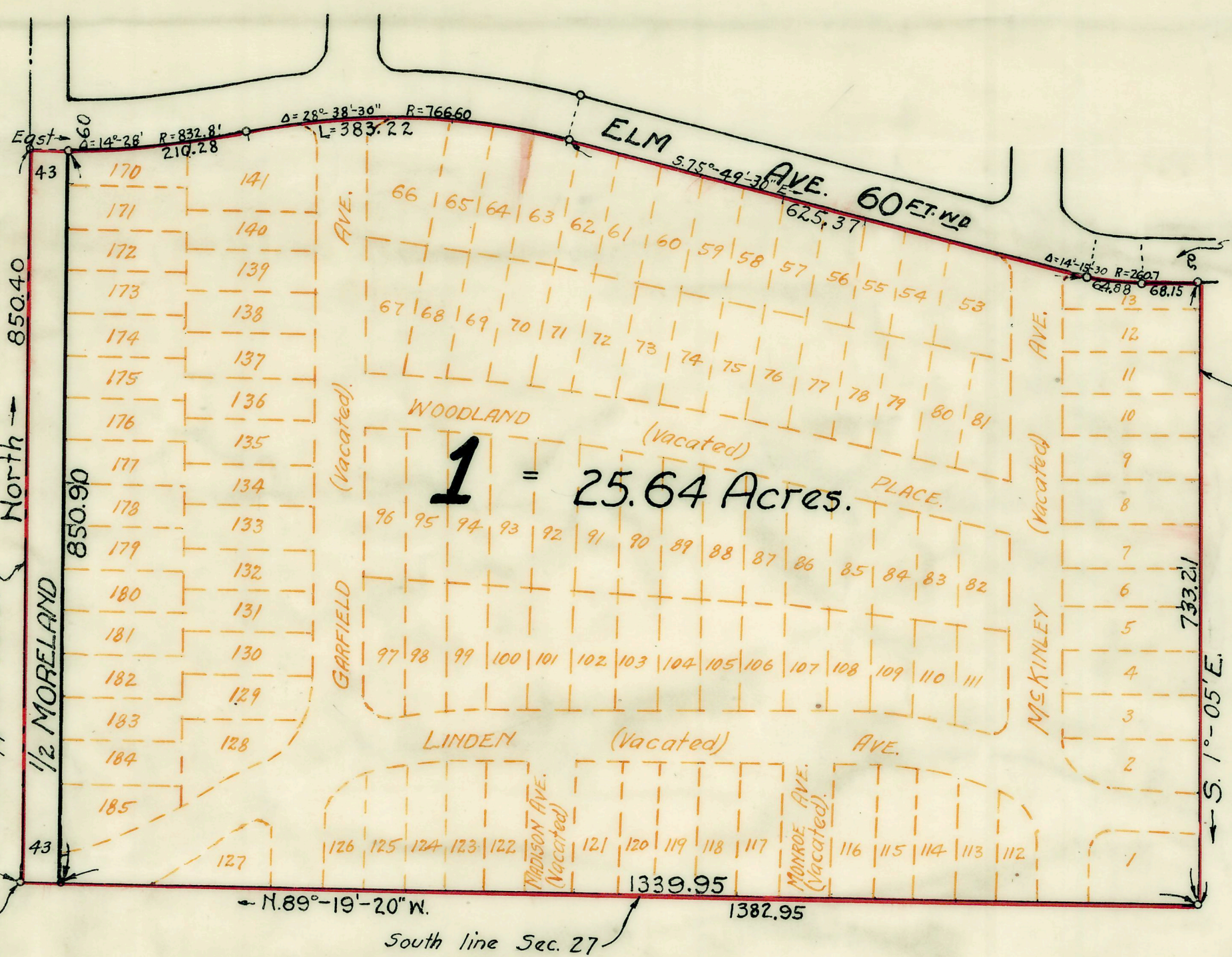
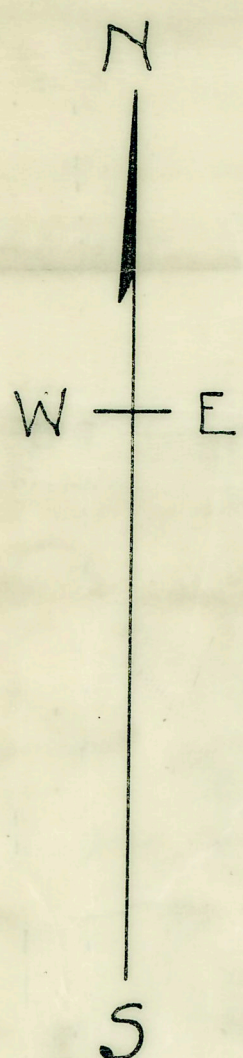


Examined and Approved  
June 28-1933  
Geo. W. Hunter  
Deputy Auditor General

July 7 1933  
Geo. W. Hunter  
Deputy Auditor General

Note:-  
All dimensions are given in feet and decimals thereof.

Wayne  
Resubdivision?  
Lots 1 to 13 inc. et al Hough Park  
June 29  
83 9  
66 Plate  
Harold E. Stall



Wayne County Treasurer's Office  
Detroit, Mich. 31<sup>st</sup> May 1933  
I hereby certify that according to the Records of this Office all Taxes for five years prior to the 26<sup>th</sup> day of May 1933 are paid, and that there are no Tax Lites or Titles held by the State or any individual against the above described property.  
Herman R. Lan 66  
WAYNE COUNTY TREASURER

APPROVED BY THE BOARD OF COUNTY AUDITORS OF WAYNE COUNTY MICH. THIS 20<sup>th</sup> day of June 33  
Ray Schneider

Note:- The streets shown dotted in Lot No. 1 were vacated by the City Commission at a meeting held February 6, 1933. A copy of the resolution is recorded in Liber 3926, Page 613, Wayne Co. Records.

### DEDICATION

KNOW ALL MEN BY THESE PRESENTS, That we Edward C. Hough and Louise S. Hough, his wife, as proprietors, have caused the land embraced in the annexed plat, to be surveyed, laid out and platted, to be known as "A Resubdivision of Lots 1 to 13 incl., 53 to 141 incl., and 170 to 185 incl., and the Vacated Streets in HOUGH PARK SUBDIVISION, in the W. 1/2 of the SE. 1/4 of Sec. 27, T. 1 S., R. 8 E., City of Plymouth, Wayne Co., Mich." and that the streets and alleys shown on said plat are hereby dedicated to the use of the public.

SIGNED AND SEALED  
IN PRESENCE OF  
Hildur C. Carlson } Edward C. Hough (S)  
Geo. W. Hunter } Louise S. Hough (S)

STATE OF MICHIGAN } S.S.  
COUNTY OF WAYNE }  
On this 26 day of May 1933, before me, a Notary Public in and for said County, personally came the above named Edward C. Hough and Louise S. Hough, known to me to be the persons who executed the above dedication, and acknowledged the same to be their free act and deed.  
Geo. W. Hunter  
Notary Public, Wayne County, Michigan.  
My Commission expires: Sept. 28, 1934

### CERTIFICATE OF MUNICIPAL APPROVAL

This plat was approved by the Commission of the City of Plymouth, Wayne County, Michigan, at a meeting held May 15, 1933.  
L. P. Cookingham Clerk.

### ENGINEER'S CERTIFICATE

I hereby certify, that the plat hereon delineated is a correct one and that permanent metal monuments, of not less than one inch in diameter and fifteen inches in length, set in a concrete base not less than four inches in diameter and forty-eight inches in depth, have been placed in the ground at all points marked thus (o) as shown thereon; at all angles in the boundaries of the land platted; at all intersections of streets, of alleys, of streets and alleys, and of streets and alleys with the boundaries of the plat.  
Harold E. Stall  
Registered Civil Engineer.

### DESCRIPTION

The land embraced in the annexed plat of "A Resubdivision of Lots 1 to 13 incl., 53 to 141 incl., and 170 to 185 incl., and the Vacated Streets in HOUGH PARK SUBDIVISION in the W. 1/2 of the SE. 1/4 of Sec. 27, T. 1 S., R. 8 E., City of Plymouth, Wayne Co., Mich." is described as follows:- Beginning at the South 1/4 Post of Sec. 27, T. 1 S., R. 8 E. Running thence North on the north and south quarter line of said Sec. 27 - 850.40 feet; thence East 43.00 feet to a point of tangency; thence along the arc of a circular curve to the left whose radius is 832.81' thru a central angle of 14°-28'; thence on the arc of a circular curve to the right whose radius is 766.60 feet, thru a central angle of 28°-38'-30" to a point of tangency; thence 5.75°-49'-30" E. 625.37 feet to a point of tangency; thence on the arc of a circular curve to the left whose radius is 260.7 feet; thru a central angle of 14°-15'-30" to a point of tangency; thence N. 89°-55' E. 68.15 feet; thence S. 1°-05' E. 733.21 feet; thence N. 89°-19'-20" W. 1382.95 feet to the PLACE OF BEGINNING.