

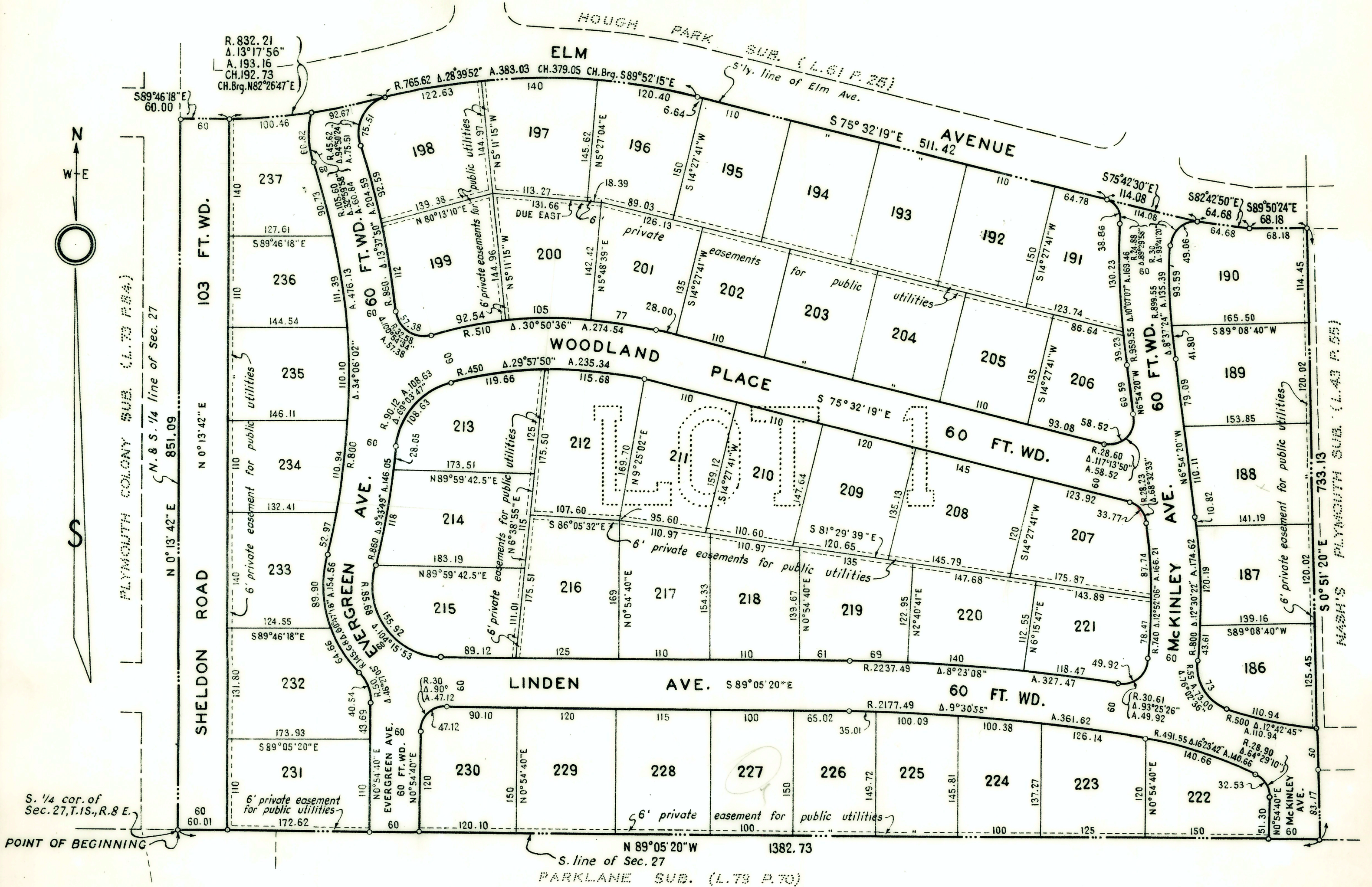
HOUGH PARK No. 2 SUB.

OF PART OF THE S.E. 1/4 OF SEC. 27, T.1 S., R. 8 E.,
CITY OF PLYMOUTH, WAYNE COUNTY, MICHIGAN

SCALE: ONE INCH=100 FEET.
0 20 40 60 80 100 150 200 300
10 30 50 70 90

SIDNEY DAVIS STRONG,
REGISTERED LAND SURVEYOR,
PLYMOUTH, MICH.

NOTE: All dimensions are shown in feet and decimals thereof.
All curvilinear dimensions are shown along the arc.



DESCRIPTION; - The land embraced in the annexed plat of Hough Park No. 2 Sub. of Part of the S.E. 1/4 of Sec. 27, T. 1 S., R. 8 E., City of Plymouth, Wayne County, Michigan, comprising Lots 186 to 237, inclusive, being a replat of Lot 1 of A Resubdivision of Lots 1 to 13, incl., 53 to 141, incl., and 170 to 185, incl., and the vacated streets in Hough Park Subdivision, recorded in Liber 65 of Plats, on Page 22, is described as follows; - Beginning at the south quarter corner of Section 27, T. 1 S., R. 8 E., City of Plymouth, Wayne County, Michigan and running thence N. 0° 13' 42" E. along the north and south quarter line of said section 851.09 feet; Thence S. 89° 46' 18" E. 60.00 feet; Thence 193.16 feet along a tangent curve concave to the north, radius 832.21 feet, central angle 13° 17' 56", whose chord bears N. 82° 26' 47" E. and is 192.73 feet long; Thence 383.05 feet along a tangent curve concave to the south, radius 765.62 feet, central angle 28° 39' 52", whose chord bears S. 89° 52' 15" E. and is 379.05 feet long; Thence S. 75° 32' 19" E. 511.42 feet; Thence S. 75° 42' 30" E., 114.08 feet; Thence S. 82° 42' 50" E., 64.68 feet; Thence S. 89° 50' 24" E., 68.18 feet; Thence S. 0° 51' 20" E. along the west line of Nash's Plymouth Sub. recorded in Liber 43 of Plats, on Page 55 - 733.13 feet to a point on the south line of said Section 27; Thence N. 89° 05' 20" W. along said south line 1382.73 feet to the point of beginning.

DEDICATION; - KNOW ALL MEN BY THESE PRESENTS, that we, the Hough Park Homesites, Incorporated, a Michigan corporation, by E.C.Hough, President and R.L.Daane, Secretary, as proprietors, have caused the land embraced in the annexed plat to be surveyed, laid out and platted to be known as "Hough Park No. 2 Sub. of Part of the S.E. 1/4 of Sec. 27, T. 1 S., R. 8 E., City of Plymouth, Wayne County, Michigan" and that the streets as shown on said plat are hereby dedicated to the use of the public and that the private easements indicated on said plat are hereby reserved for the use of public utilities and no permanent structures are to be erected within the lines of said easements.

Signed and sealed in the presence of
WITNESSES
Robert O. Wesley
Gwen Y. Baxter

HOUGH PARK HOMESITES, INCORPORATED
E.C.Hough, President
R.L.Daane, Secretary

STATE OF MICHIGAN)
County of Wayne) ss.

On this 16th day of August A.D. 1956, before me Gwen Y. Baxter a Notary Public in and for said county appeared E.C.Hough and R.L.Daane to me personally known, who being each by me duly sworn did say that they are the President and Secretary, respectively, of the Hough Park Homesites, Incorporated, a Michigan corporation, and that said instrument was signed in behalf of said corporation by authority of its Board of Directors and the said E.C.Hough and R.L.Daane acknowledged said instrument to be the free act and deed of said corporation.

Gwen Y. Baxter
Gwen Y. Baxter, Notary Public, Wayne County

My Commission expires March 1, 1959

SURVEYOR'S CERTIFICATE; - I hereby certify that the plat hereon delineated is a correct one and that permanent metal monuments consisting of bars not less than one half inch in diameter and 36 inches in length encased in concrete cylinders at least 4 inches in diameter and 36 inches in depth have been placed at all points marked thus (o) as hereon shown at all angles in the boundaries of the land platted, at all the intersections of the lines of streets and at all intersections of lines of streets with the boundaries of the plat.

Sidney Davis Strong
Sidney Davis Strong, Registered Civil Engineer and Land Surveyor

CERTIFICATE OF PLANNING COMMISSION APPROVAL; - This plat was approved by the Planning Commission of the City of Plymouth at a meeting held May 17, 1956

Ezra F. Rotnour, Acting Chairman

CERTIFICATE OF MUNICIPAL APPROVAL; - This plat was approved by the City Commission of the City of Plymouth at a meeting held August 20, 1956, and I hereby certify that the widths of lots are in compliance with the requirements of Sec. 30, Act 172 of 1929, as amended, and that adequate bond has been deposited with the City of Plymouth to insure the installation of public sanitary sewer and water facilities within the plat.

Kenneth E. Way, City Clerk

APPROVED BY THE
BOARD OF COUNTY ROAD COMMISSIONERS
OF THE COUNTY OF WAYNE, MICHIGAN
MICHAEL J. O'BRIEN, CHAIRMAN
DATE: Aug. 23, 1956

THIS IS TO CERTIFY THAT THERE ARE NO TAX LIENS OR TITLES ON THIS PROPERTY, AND THAT TAXES ARE PAID FOR FIVE YEARS PREVIOUS TO DATE OF THIS INSTRUMENT.
EXCEPT
Wardell E. Still, Wayne County Treas.
DATE: 9-21-56 BY: C.G. FINLEY

COPY
Register's Office
Wayne County
Plat of Hough Park No. 2 Sub.
City of Plymouth
Was filed this 28th day of
Sept. 1956
A. 79 of Plats
on Page 96
Bernard J. Youngblood

I hereby certify this copy is a true copy of map or plat forwarded the Register of deeds for recording.
Date: Sept. 27, 1956
FILED IN REGISTER OF DEEDS DEPT.
Date: Oct. 8, 1956
Date: Sept. 27, 1956
Auditor General
By: D.L. MacElroy

Approved as to compliance with all plat regulations of the Plat Board of Wayne Co. Mich. Sept. 25, 1956
Walter A. Lesnick
Walter A. Lesnick, County Plat Engineer

APPROVED BY THE PLAT BOARD OF WAYNE COUNTY, MICH. THIS
DAY OF SEP 25 1956
Bernard J. Youngblood
Arthur A. Sumeracki
Chas. F. Edgcomb
Jacob F. Sumeracki