

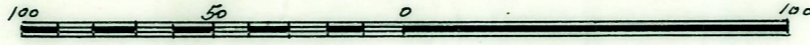
# GEO. B. SHAFER'S SUB.

of part of S.W. 1/4 of sec. 26 T.15.R.8.E. lying N. of Ann Arbor Rd. & Penniman Ave.

PLYMOUTH VILLAGE

WAYNE CO. MICH.

Scale 50 ft. = 1 in.



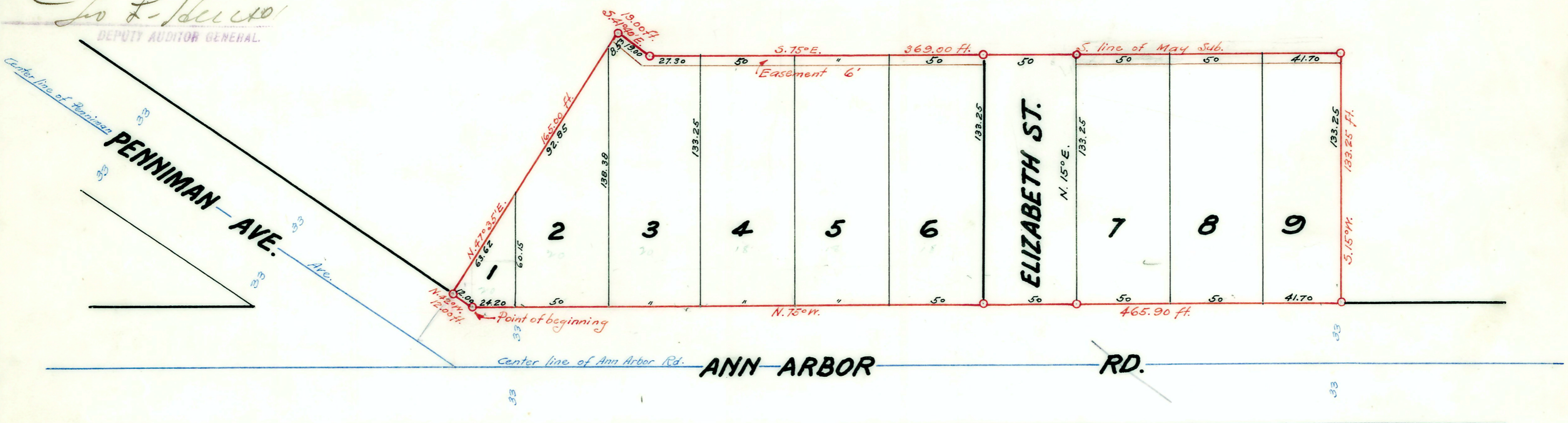
Note: All dimensions are given in feet and decimals thereof.

Examined and Approved  
 Oct 15-1920  
 L. H. Hume

WILLMARTH ENG. CO.  
 REDFORD MICH.

Register's Office  
 16 days of  
 20 946  
 43 of Plots  
 22 Otto Hall  
 Register of Deeds  
 ORIGINAL ON FILE  
 I HEREBY CERTIFY THAT THIS COPY IS  
 A TRUE COPY OF THE MAP OR PLAT  
 FORWARDED TO THE REGISTER OF DEEDS  
 FOR RECORD  
 Oct 15-1920  
 L. H. Hume  
 DEPUTY AUDITOR GENERAL

FILED IN AUDITOR GENERAL'S DEPT.  
 Oct 19-1920  
 L. H. Hume  
 DEPUTY AUDITOR GENERAL



### DESCRIPTION.

The land embraced in the annexed plat of "Geo. B. Shafer's Sub." of part of S.W. 1/4 of sec. 26 T.15.R.8.E. lying N. of Ann Arbor Rd. & Penniman Ave. Plymouth Village Wayne Co. Mich. is described as follows:  
 Beginning at the intersection of the N. lines of Ann Arbor Rd. & Penniman Ave. and running thence along the N. line of Penniman Ave. N. 42° W. 12.00 ft. to a point; thence N. 47° 35' E. 16.50 ft. to a point; thence S. 41° 40' E. 19.00 ft. to a point; thence S. 75° E. 369.90 ft. to a point; thence S. 15° W. 133.25 ft. to a point; thence along the N. line of Ann Arbor Rd. N. 75° W. 465.90 ft. to the point of beginning.

Note: The rear 6 ft. of lots 3 to 9 are hereby dedicated for the use of all public utilities except vehicular traffic.

KNOW ALL MEN BY THESE PRESENTS, That I, George B. Shafer  
 a single man as per vendor

do hereby certify that the plat herein delineated is a correct one and that permanent monuments, consisting of 1 x 1 1/2 inch iron spikes have been planted at points marked thereon.

SIGNED AND SEALED IN PRESENCE OF  
George B. Shafer (S.)  
Mabel C. Shafer (L.S.)

I hereby certify that the plat herein delineated is a correct one and that permanent monuments, consisting of 1 x 1 1/2 inch iron spikes have been planted at points marked thereon.

as thereon shown at all angles in the boundaries of the land platted, and at all intersections of streets or streets and alleys.

WILLMARTH ENG. CO.  
 H. J. WILLMARTH, Reg.

This plat was approved by the  
 Commission of Plymouth  
 Village Sept. 7, 1920  
 at a meeting held Sidney D. Strong (Clerk)

APPROVED BY THE BOARD OF COUNTY  
 AUDITORS OF WAYNE COUNTY MICH. THIS  
 24th DAY OF Sept. 1920  
John E. Stymann CHAIRMAN  
John E. Stymann  
John E. Stymann

STATE OF MICHIGAN  
 County of Wayne  
 On this 6th day of August 1920  
George B. Shafer a single man  
Claude L. Shafer  
 Mayor  
 June 5-1921

Wayne County Treasurer's Office  
 Detroit, Mich. Sept. 16th 1920  
 I hereby certify that according to the Records of this Office all Taxes for five years prior to the 6th day of August 1920 are paid, and that there are no Tax Liens or Titles held by the State or any individual against the above described property.  
 WAYNE COUNTY TREASURER

Shafer