

# BIRCH ESTATES SUB.

OF PART OF THE N.W. 1/4 OF SECTION 35, T. 1 S., R. 8 E.,  
CITY OF PLYMOUTH, WAYNE COUNTY, MICHIGAN

SCALE: 1" = 100 FT.

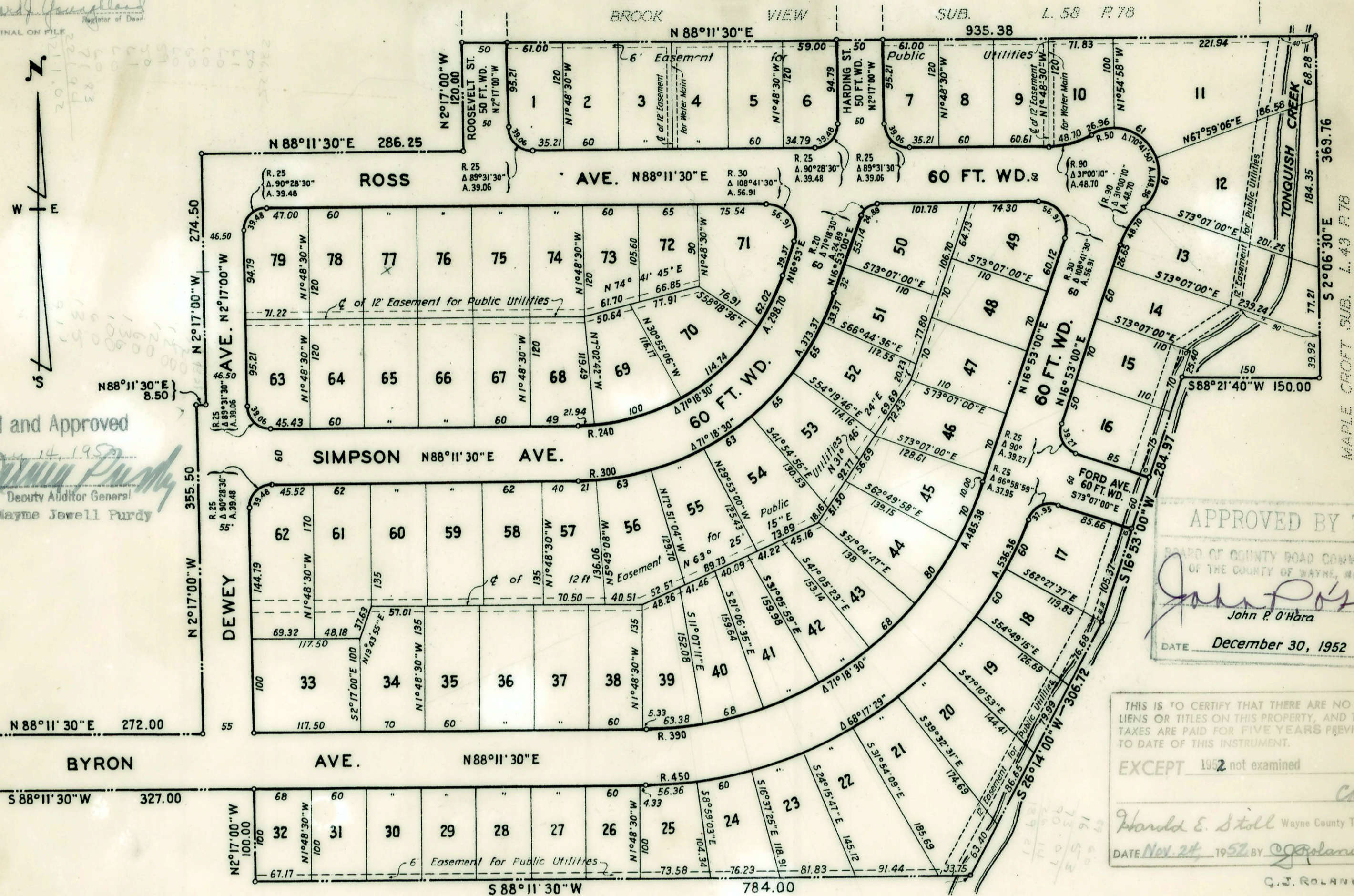
NOTE: All dimensions are shown in feet and decimals thereof.  
All curvilinear dimensions are shown along the arc.

HERALD F. HAMILL  
Reg. Civil Engineer & Land Surveyor  
PLYMOUTH, MICHIGAN

APPROVED BY THE PLAT BOARD  
OF WAYNE COUNTY, MICH. THIS

JAN - 6 1952  
CHAIRMAN  
Vice-Chairman  
Secretary

1-14-53 COPY  
Register's Office  
Wayne County  
Plat of Birch Estates Sub.  
City of Plymouth  
was Recorded this 17 day of  
Jan A.D. 1952 at 11 O'clock  
A.M. in Liber 74 of Plate  
Page 22  
Bernard J. Youngblood  
Register of Deeds



Examined and Approved  
Wayne Jewell Purdy  
Deputy Auditor General  
Wayne County

APPROVED BY THE  
BOARD OF COUNTY ROAD COMMISSIONERS  
OF THE COUNTY OF WAYNE, MICHIGAN  
John P. O'Hara  
DATE December 30, 1952

THIS IS TO CERTIFY THAT THERE ARE NO TAX  
LIENS OR TITLES ON THIS PROPERTY, AND THAT  
TAXES ARE PAID FOR FIVE YEARS PREVIOUS  
TO DATE OF THIS INSTRUMENT.  
EXCEPT 1952 not examined  
Wayne County Treas.  
DATE Nov 24, 1952 by G.J. Roland

I HEREBY CERTIFY THAT THIS COPY IS  
A TRUE COPY OF THE MAP OR PLAT  
FORWARDED THE REGISTER OF DEEDS  
FOR RECORDING.

Wayne Jewell Purdy  
DEPUTY AUDITOR GENERAL  
Wayne County

ACKNOWLEDGMENT  
STATE OF MICHIGAN)  
County of Wayne )ss.  
On this 20th day of December 1952, before  
me, a Notary Public in and for said county, personally  
came the above named Carol E. Dodge, known to me to be  
the person who executed the above dedication, and acknow-  
ledged the same to be her free act and deed.  
Erma G. McLean  
Notary Public Wayne Co., Mich.  
My Commission expires June 13, 1953.

DESCRIPTION OF LAND PLATTED  
The land embraced in the annexed plat of BIRCH ESTATES SUB.,  
of part of the N.W. 1/4 of Section 35, T. 1 S., R. 8 E., City of  
Plymouth, Wayne County, Michigan, is described as follows:  
Beginning at a point on the west line of Section 35, T. 1 S.,  
R. 8 E., City of Plymouth, Wayne County, Michigan, which point  
is distant N. 2° 17' 00" W., 350.35 feet from the West 1/4  
Corner of said Section 35; thence continuing N. 2° 17' 00" W.,  
along the west line of said Section 35, a distance of 60.00  
feet; thence N. 88° 11' 30" E., 272.00 feet; thence N. 2° 17'  
00" W., 355.50 feet; thence N. 88° 11' 30" E., 8.50 feet;  
thence N. 2° 17' 00" W., 274.50 feet; thence N. 88° 11' 30" E.,  
286.25 feet; thence N. 2° 17' 00" W., 120.00 feet; thence N.  
88° 11' 30" E., along the south line of Brook View Subdivision,  
L. 58, P. 78, and along the south line of Maple Croft Subdivi-  
sion, L. 43, P. 78, a distance of 935.38 feet; thence S. 2°  
06' 30" E., along the west line of said Maple Croft Subdivision  
369.76 feet; thence S. 88° 21' 40" W., 150.00 feet; thence S.  
16° 53' 00" W., 284.97 feet; thence S. 26° 14' 00" W., 306.72  
feet; thence S. 88° 11' 30" W., 784.00 feet; thence N. 2° 17'  
00" W., 100.00 feet; thence S. 88° 11' 30" W., 327.00 feet to  
the POINT OF BEGINNING.

KNOW ALL MEN BY THESE PRESENTS, That we, Carol E. Dodge  
and the City of Plymouth, a Michigan Municipal Corpora-  
tion, by Russell M. Daane, Mayor, and Lamont BeGole,  
Clerk, as proprietors, and Birch Estates Development  
Company, a Michigan Corporation, by George E. Kandt,  
President, and Edward N. Long, Secretary, as proprietors  
and vendees, have caused the land embraced in the annexed  
plat to be surveyed, laid out and platted, to be known as  
"Birch Estates Sub., of Part of the N. W. 1/4 of Section  
35, T. 1 S., R. 8 E., City of Plymouth, Wayne County,  
Michigan", and that the streets as shown on said plat are  
hereby dedicated to the use of the public, and that the  
easements shown on said plat are hereby reserved for the  
use of public utilities, and that no permanent structures  
are to be erected within the lines of said easements.  
The regulation and control of the use thereof shall be  
subject to the local governmental authority.

Witnesses:  
John S. Dayton  
Herald F. Hamill  
Carol E. Dodge (L.S.)

CITY OF PLYMOUTH  
By Russell M. Daane, Mayor  
Lamont BeGole, Clerk

BIRCH ESTATES DEVELOPMENT COMPANY  
By George E. Kandt, President  
Edward N. Long, Secretary

ACKNOWLEDGMENT  
STATE OF MICHIGAN)  
County of Wayne )ss.  
On this 20th day of December 1952, before  
me, a Notary Public in and for said county appeared  
Russell M. Daane and Lamont BeGole, to me personally  
known, who being each by me duly sworn did say that they  
are the Mayor and Clerk respectively of the City of  
Plymouth a Municipal corporation, and that the seal affixed  
to said instrument is the corporate seal of said corpora-  
tion and that said instrument was signed and sealed in  
behalf of said corporation by authority of its City  
Commissioners and the said Russell M. Daane and  
Lamont BeGole acknowledged said instrument to be the free  
act and deed of said corporation.

Notary Public Wayne Co., Mich.  
My Commission expires August 21, 1953.

ACKNOWLEDGMENT  
STATE OF MICHIGAN)  
County of Wayne )ss.  
On this 20th day of December A.D. 1952,  
before me, a Notary Public in and for said county appeared  
George E. Kandt and Edward N. Long, to me personally known  
who being each by me duly sworn did say that they are the  
President and Secretary respectively of the Birch Estates  
Development Corporation, and that seal affixed to said  
instrument is the corporate seal of said corporation and  
that said instrument was signed and sealed in behalf of  
said corporation by authority of its Board of Directors  
and the said George E. Kandt and Edward N. Long acknow-  
ledged said instrument to be the free act and deed of said  
corporation.

Notary Public Wayne Co., Mich.  
My Commission expires June 13, 1953.

CERTIFICATE OF APPROVAL BY CITY PLANNING COMMISSION  
This plat was approved by the Planning Commission of the  
City of Plymouth, Michigan, at a meeting held November  
20, 1952.  
Sidney D. Strong  
Chairman

CERTIFICATE OF MUNICIPAL APPROVAL  
This plat was approved by the City Commission of the City  
of Plymouth, Michigan, at a meeting held December  
1st, 1952.  
Lamont BeGole  
Clerk

SURVEYOR'S CERTIFICATE  
I hereby certify that the plat hereon delineated is a correct one, and that permanent  
monuments consisting of iron rods at least one half inch in diameter and 48 inches in  
length, encased in concrete cylinders four inches in diameter and 48 inches in length,  
have been set at points marked thus (O) as thereon shown at all angles in the bound-  
aries of the land platted, at all intersections of the lines of streets and at intersections  
of the lines of streets with the boundaries of the plat.  
Herald F. Hamill  
Registered Land Surveyor

FILED IN AUDITOR GENERAL'S DEPT.  
Wayne Jewell Purdy  
DEPUTY AUDITOR GENERAL  
Wayne County