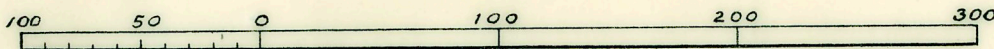


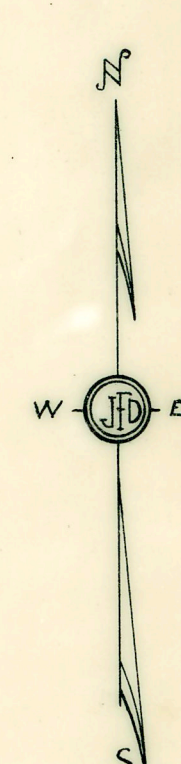
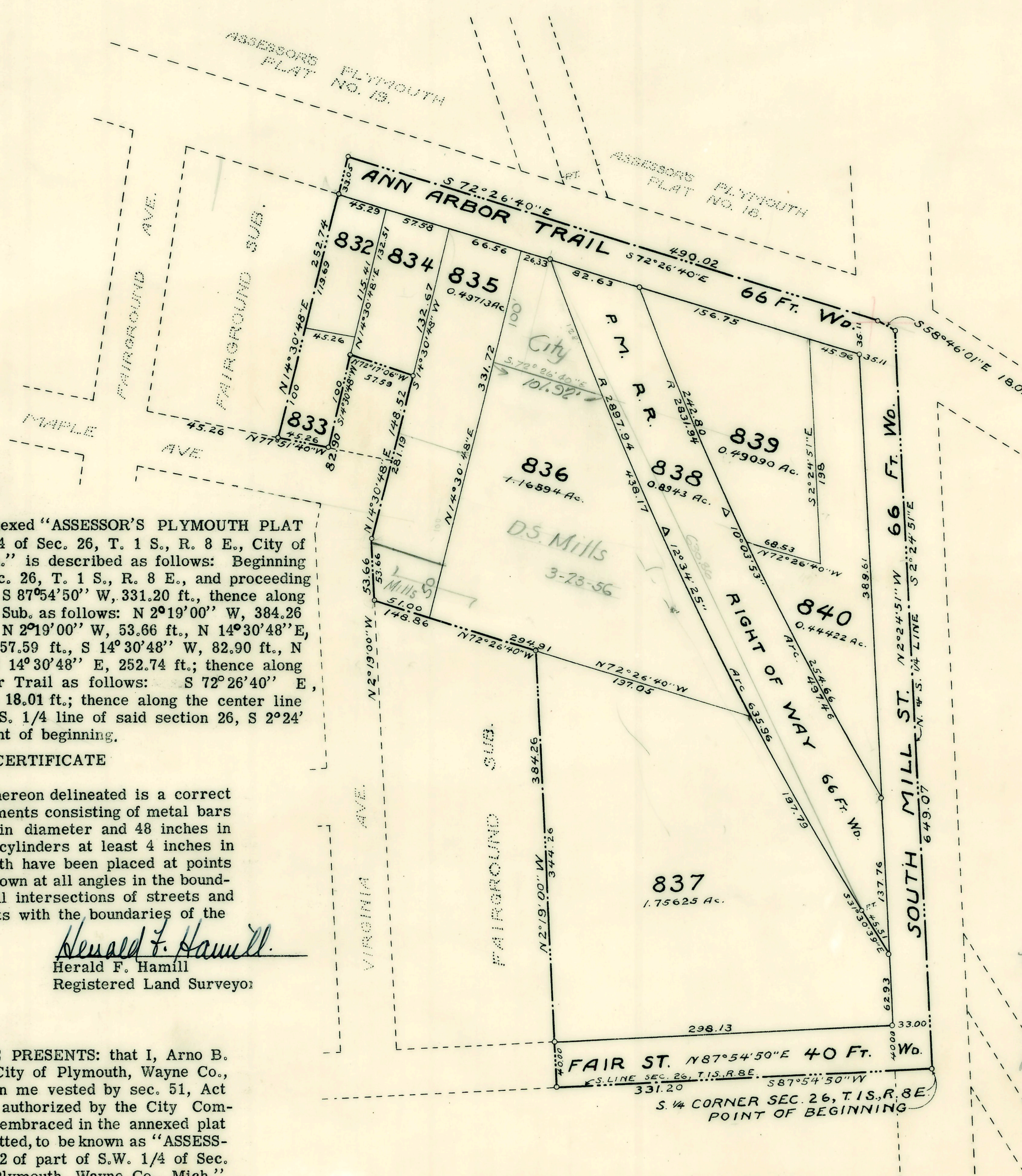
# ASSESSOR'S PLYMOUTH PLAT NO 22

of part of S.W. 1/4 of Sec. 26, T.1 S., R. 8 E.,  
CITY OF PLYMOUTH WAYNE CO. MICH.

Scale 1" = 80'



Note: All dimensions are given in feet and decimals thereof.  
All curvilinear dimensions are given along the arc.



### DESCRIPTION

The land embraced in the annexed "ASSESSOR'S PLYMOUTH PLAT NO. 22 of part of S.W. 1/4 of Sec. 26, T. 1 S., R. 8 E., City of Plymouth, Wayne Co., Mich." is described as follows: Beginning at the S. 1/4 Corner of Sec. 26, T. 1 S., R. 8 E., and proceeding thence along the section line, S 87°54'50" W, 331.20 ft., thence along the boundaries of Fairground Sub. as follows: N 2°19'00" W, 384.26 ft., N 72°26'40" W, 148.86 ft., N 2°19'00" W, 53.66 ft., N 14°30'48" E, 148.52 ft., N 72°17'06" W, 57.59 ft., S 14°30'48" W, 82.90 ft., N 77°51'40" W, 45.26 ft., and N 14°30'48" E, 252.74 ft.; thence along the center line of Ann Arbor Trail as follows: S 72°26'40" E, 490.02 ft., and S 58°46'01" E, 18.01 ft.; thence along the center line of South Mill St. and N. & S. 1/4 line of said section 26, S 2°24'51" E, 649.07 ft. to the point of beginning.

### SURVEYOR'S CERTIFICATE

I hereby certify that the plat hereon delineated is a correct one and that permanent monuments consisting of metal bars not less than one-half inch in diameter and 48 inches in length encased in concrete cylinders at least 4 inches in diameter and 48 inches in depth have been placed at points marked thus (o) as thereon shown at all angles in the boundaries of the land platted, at all intersections of streets and at the intersections of streets with the boundaries of the plat.

*Herald F. Hamill*  
Herald F. Hamill  
Registered Land Surveyor

### DEDICATION

KNOW ALL MEN BY THESE PRESENTS: that I, Arno B. Thompson, Assessor of the City of Plymouth, Wayne Co., Mich., by virtue of authority in me vested by sec. 51, Act 172 of 1929, having been duly authorized by the City Commission, have caused the land embraced in the annexed plat to be surveyed, laid out and platted, to be known as "ASSESSOR'S PLYMOUTH PLAT No. 22 of part of S.W. 1/4 of Sec. 26, T. 1 S., R. 8 E., City of Plymouth, Wayne Co., Mich." and I hereby certify that the title to the streets shown on said plat has been acquired by the public by reason of purchase, dedication, condemnation, or adverse possession for public use.

Signed and Sealed in Presence of Witnesses:  
*Arno B. Thompson*  
Arno B. Thompson, Assessor of City of Plymouth  
*Rosemary J. Lyke*  
Rosemary J. Lyke  
*Chas. H. Garlett*  
Chas. H. Garlett

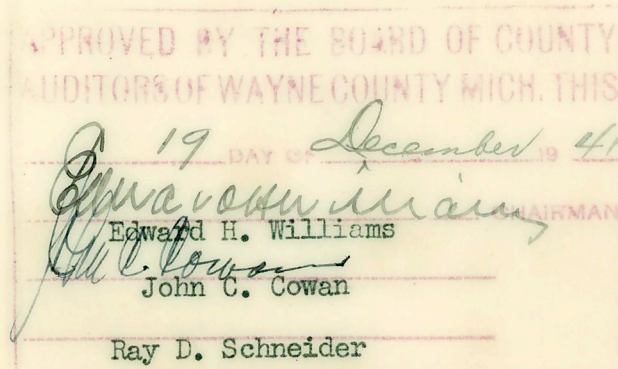
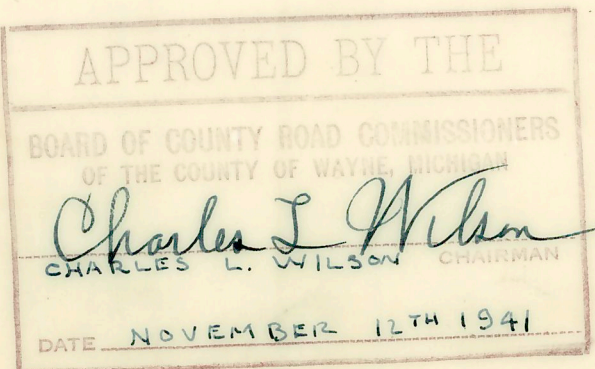
### ACKNOWLEDGEMENT

STATE OF MICHIGAN )  
COUNTY OF WAYNE ) SS  
On this 22nd day of October, A.D. 1941, before me, a Notary Public, personally came the above named Arno B. Thompson, Assessor of the City of Plymouth, Wayne County, Michigan, known to me to be the person who executed the above dedication and acknowledged the same to be his free act and deed as such Assessor.

My Commission expires May 21-43  
*V.R. Smith*  
Notary Public, Wayne County, Michigan.

### MUNICIPAL APPROVAL

I hereby certify that this plat has been approved by the City Commission of the City of Plymouth at a session held October 27, 1941  
*C. H. Elliott* City Clerk



COPY  
Register's Office  
Wayne County, Mich.  
Plat of Assessor's Plymouth Plat No. 22, City of Plymouth  
was Recorded this 23 day of December, A.D., 1941 at 12 o'clock P. M. in Liber 69 of Plats  
on Page 15  
*Herald F. Hamill*  
Register of Deeds  
ORIGINAL ON FILE

I HEREBY CERTIFY THAT THIS COPY IS A TRUE COPY OF THE MAP OR PLAT FORWARDED THE REGISTER OF DEEDS FOR RECORDING.

COMPARED December 23, 1941  
*Mayme Jewell Purdy*  
Mayme Jewell Purdy DEPUTY AUDITOR GENERAL

Examined and Approved  
December 23, 1941  
*Mayme Jewell Purdy*  
Mayme Jewell Purdy Deputy Auditor General

FILED IN AUDITOR GENERAL'S DEPT.  
January 22, 1942  
*Mayme Jewell Purdy*  
Mayme Jewell Purdy DEPUTY AUDITOR GENERAL