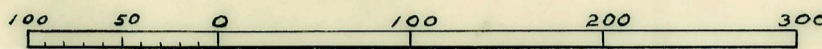


ASSESSOR'S PLYMOUTH PLAT NO 21

of part of S.W. 1/4 of Sec. 26, T. 1 S., R. 8 E.,
CITY OF PLYMOUTH, WAYNE CO., MICH.

Scale 1" = 100'



Note: All dimensions are given in feet and decimals thereof.
All curvilinear dimensions are given along the arc.

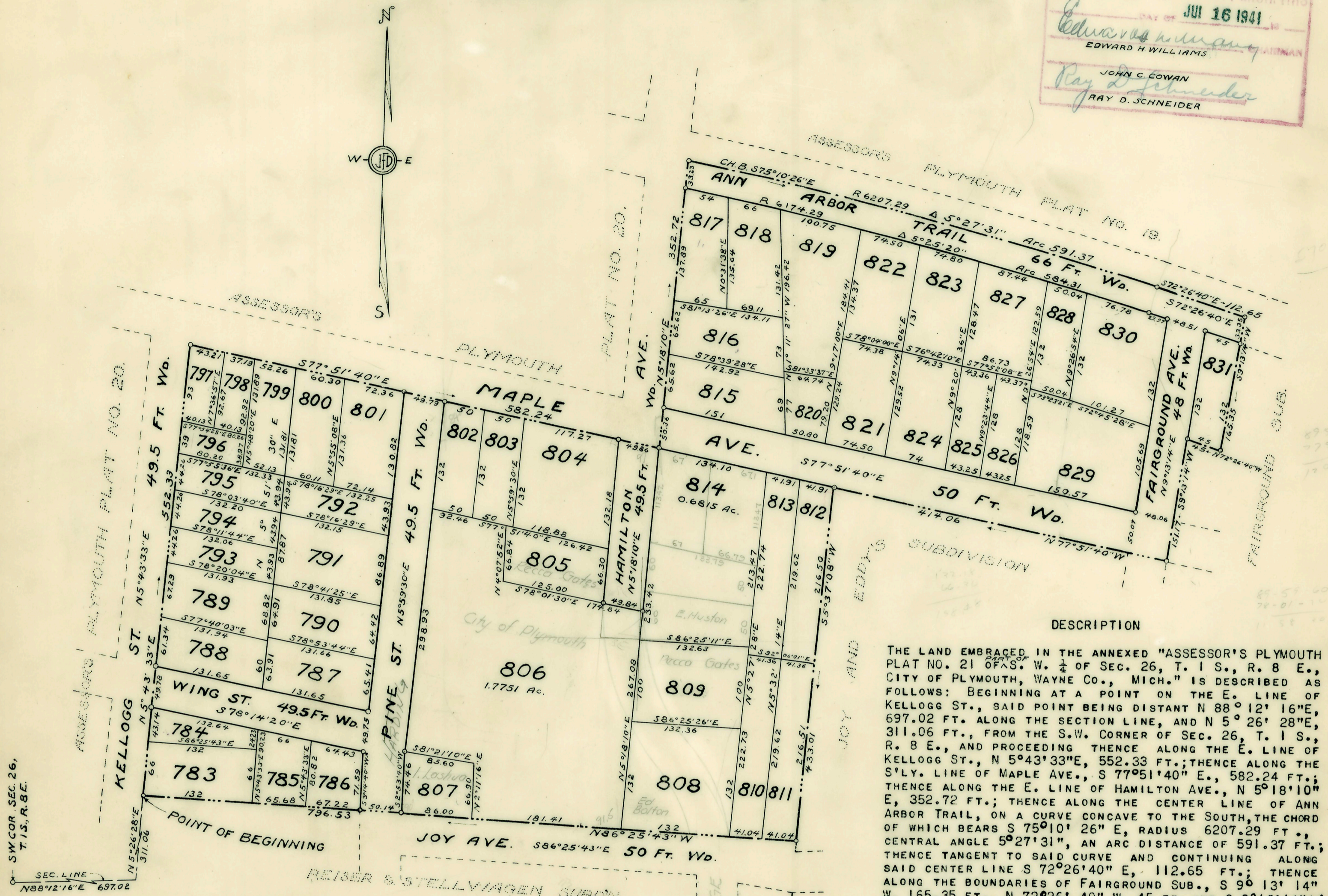
APPROVED BY THE BOARD OF COUNTY
AUDITORS OF WAYNE COUNTY MICH. THIS

JULY 16 1941

Edward H. Williams
EDWARD H. WILLIAMS

John C. Cowan
JOHN C. COWAN

Ray D. Schneider
RAY D. SCHNEIDER



DESCRIPTION

THE LAND EMBRACED IN THE ANNEXED "ASSESSOR'S PLYMOUTH PLAT NO. 21 OF S.W. 1/4 OF SEC. 26, T. 1 S., R. 8 E., CITY OF PLYMOUTH, WAYNE CO., MICH." IS DESCRIBED AS FOLLOWS: BEGINNING AT A POINT ON THE E. LINE OF KELLOGG ST., SAID POINT BEING DISTANT N 88° 12' 16" E, 697.02 FT. ALONG THE SECTION LINE, AND N 5° 26' 28" E, 311.06 FT., FROM THE S.W. CORNER OF SEC. 26, T. 1 S., R. 8 E., AND PROCEEDING THENCE ALONG THE E. LINE OF KELLOGG ST., N 5° 43' 33" E, 552.33 FT.; THENCE ALONG THE S'LY. LINE OF MAPLE AVE., S 77° 51' 40" E, 582.24 FT.; THENCE ALONG THE E. LINE OF HAMILTON AVE., N 5° 18' 10" E, 352.72 FT.; THENCE ALONG THE CENTER LINE OF ANN ARBOR TRAIL, ON A CURVE CONCAVE TO THE SOUTH, THE CHORD OF WHICH BEARS S 75° 10' 26" E, RADIUS 6207.29 FT., CENTRAL ANGLE 5° 27' 31", AN ARC DISTANCE OF 591.37 FT.; THENCE TANGENT TO SAID CURVE AND CONTINUING ALONG SAID CENTER LINE S 72° 26' 40" E, 112.65 FT.; THENCE ALONG THE BOUNDARIES OF FAIRGROUND SUB., S 9° 13' 14" W, 165.35 FT., N 72° 26' 40" W, 45 FT., AND S 9° 13' 14" W, 151.17 FT.; THENCE ALONG THE S'LY. LINE OF MAPLE AVE., N 77° 51' 40" W, 414.06 FT.; THENCE ALONG THE W'LY. BOUNDARY OF JOY AND EDDY'S SUBDIVISION, S 5° 37' 08" W, 433.01 FT.; THENCE ALONG THE N'LY. BOUNDARY OF THE REISER & STELLWAGEN SUBD'N., N 86° 25' 43" W, 796.53 FT. TO THE POINT OF BEGINNING.

DEDICATION

KNOW ALL MEN BY THESE PRESENTS; THAT I, ARNO B. THOMPSON, ASSESSOR OF THE CITY OF PLYMOUTH, WAYNE CO., MICH., BY VIRTUE OF AUTHORITY IN ME VESTED BY SEC. 51, ACT 172 OF 1929, HAVING BEEN DULY AUTHORIZED BY THE CITY COMMISSION, HAVE CAUSED THE LAND EMBRACED IN THE ANNEXED PLAT TO BE SURVEYED, LAID OUT AND PLATTED, TO BE KNOWN AS "ASSESSOR'S PLYMOUTH PLAT NO. 21 OF PART OF S.W. 1/4 OF SEC. 26, T. 1 S., R. 8 E., CITY OF PLYMOUTH, WAYNE CO., MICH." AND I HEREBY CERTIFY THAT THE TITLE TO THE STREETS SHOWN ON SAID PLAT HAS BEEN ACQUIRED BY THE PUBLIC BY REASON OF PURCHASE, DEDICATION, CONDEMNATION, OR ADVERSE POSSESSION FOR PUBLIC USE.

SIGNED AND SEALED IN PRESENCE OF WITNESSES:

Linnea Wickstrom
Linnea Wickstrom

Rosemary J. Lyke
Rosemary J. Lyke

Arno B. Thompson
ARNO B. THOMPSON
ASSESSOR OF THE CITY OF PLYMOUTH

ACKNOWLEDGEMENT

STATE OF MICHIGAN)
COUNTY OF WAYNE) SS

ON THIS 2nd DAY of July, A.D. 1941, BEFORE ME, A NOTARY PUBLIC, PERSONALLY CAME THE ABOVE NAMED ARNO B. THOMPSON, ASSESSOR OF THE CITY OF PLYMOUTH, WAYNE COUNTY, MICHIGAN, KNOWN TO ME TO BE THE PERSON WHO EXECUTED THE ABOVE DEDICATION AND ACKNOWLEDGED THE SAME TO BE HIS FREE ACT AND DEED AS SUCH ASSESSOR.

MY COMMISSION EXPIRES
Dec. 33 1944

Chas. J. Thumme
NOTARY PUBLIC, WAYNE COUNTY, MICHIGAN
Chas. J. Thumme

MUNICIPAL APPROVAL

I HEREBY CERTIFY THAT THIS PLAT HAS BEEN APPROVED BY THE CITY COMMISSION OF THE CITY OF PLYMOUTH AT A SESSION HELD June 30, 1941

C. H. Elliott
CITY CLERK
C. H. ELLIOTT

SURVEYOR'S CERTIFICATE

I HEREBY CERTIFY THAT THE PLAT HEREON DELINEATED IS A CORRECT ONE AND THAT PERMANENT METAL MONUMENTS CONSISTING OF BARS NOT LESS THAN ONE-HALF INCH IN DIAMETER AND 48 INCHES IN LENGTH ENCASED IN A CONCRETE CYLINDER AT LEAST 4 INCHES IN DIAMETER AND 48 INCHES IN DEPTH HAVE BEEN PLACED AT POINTS MARKED THUS (O) AS THEREON SHOWN AT ALL ANGLES IN THE BOUNDARIES OF THE LAND PLATTED, AT ALL INTERSECTIONS OF STREETS AND AT THE INTERSECTIONS OF STREETS WITH THE BOUNDARIES OF THE PLATS AS SHOWN ON SAID PLAT.

Herald F. Hamill
HERALD F. HAMILL
REGISTERED LAND SURVEYOR

COPY
Register's Office }
Wayne County, } ss.
Plat of Assessor's Plymouth
Plat No. 21, City of Plymouth
was Recorded this 2nd day of
August A.D., 1941 at 9:20 o'clock
A.M. in Liber 68 of Plats
on Page 21
Harold E. Stree
REGISTER OF DEEDS

Examined and Approved

August 1, 1941
Mayme Jewell Purdy
Mayme Jewell Purdy DEPUTY AUDITOR GENERAL

August 23, 1941
Mayme Jewell Purdy
Mayme Jewell Purdy DEPUTY AUDITOR GENERAL

FILED IN AUDITOR GENERAL'S DEPT.

I HEREBY CERTIFY THAT THIS COPY IS A TRUE COPY OF THE MAP OR PLAT FORWARDED THE REGISTER OF DEEDS FOR RECORDING.

COMPARED August 17, 1941
Mayme Jewell Purdy
Mayme Jewell Purdy DEPUTY AUDITOR GENERAL

APPROVED BY THE

BOARD OF COUNTY ROAD COMMISSIONERS
OF THE COUNTY OF WAYNE, MICHIGAN

Charles L. Wilson
CHARLES L. WILSON
CHAIRMAN

DATE July 11th 1941