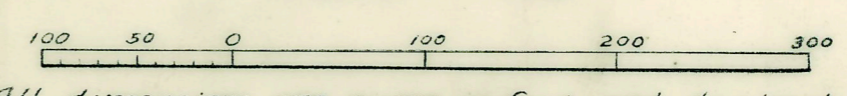


Register's  
Wayne County, ss.  
Plat of Assessor's Plymouth Plat  
No. 19, City of Plymouth  
was Recorded this 16 day of  
Mar. A.D., 1940, at 9 O'clock  
A. M. in Liber. 67 of Plate  
on Page 26  
Harold E. Hamill  
Register of Deeds

# ASSESSOR'S PLYMOUTH PLAT NO 19

of part of S.W. 1/4 of Sec. 26, T.15, R.8 E.,  
CITY OF PLYMOUTH, WAYNE CO., MICH.

Scale 1" = 100'



Note: All dimensions are given in feet and decimals thereof.

**DEDICATION**  
KNOW ALL MEN BY THESE PRESENTS, That I, William B. Petz, Assessor of the City of Plymouth, Wayne Co., Mich., by virtue of authority in me vested by sec. 51, Act 172 of 1929, having been duly authorized by the City Commission, have caused the land embraced in the annexed plat to be surveyed, laid out and platted, to be known as "ASSESSOR'S PLYMOUTH PLAT NO. 19 of part of S.W. 1/4 of Sec. 26, T.1 S., R.8 E., City of Plymouth, Wayne Co., Mich." and I hereby certify that the title to streets and alleys shown on said plat has been acquired by the public by reason of purchase, dedication, condemnation, adverse possession, prescription or user.

SIGNED AND SEALED IN PRESENCE OF WITNESSES:

*Chas. H. Garlett*  
Chas. H. Garlett

*William B. Petz*  
William B. Petz -  
Assessor of the City of Plymouth

*Nellie V. Cash*  
Nellie V. Cash

STATE OF MICHIGAN) ss.  
COUNTY OF WAYNE)

**ACKNOWLEDGMENT**  
On this 7th day of February A.D. 1940, before me, a Notary Public, personally came the above named William B. Petz, Assessor of the City of Plymouth, Wayne County, Michigan, known to me to be the person who executed the above dedication and acknowledged the same to be his free act and deed as such Assessor.

*V.R. Smith*  
V.R. Smith  
Notary Public, Wayne County, Michigan

My commission expires  
May 21-43.

APPROVED BY THE BOARD OF COUNTY  
AUDITORS OF WAYNE COUNTY MICH. THIS  
DAY OF FEBRUARY 1940  
*Ray D. Schneider*  
Ray D. Schneider  
Chairman  
*Edward H. Williams*  
Edward H. Williams  
*John C. Cowan*  
John C. Cowan

FILED IN AUDITOR GENERAL'S DEPT.  
March 12, 1940  
*Mayme Jewell Purdy*  
Mayme Jewell Purdy  
DEPUTY AUDITOR GENERAL

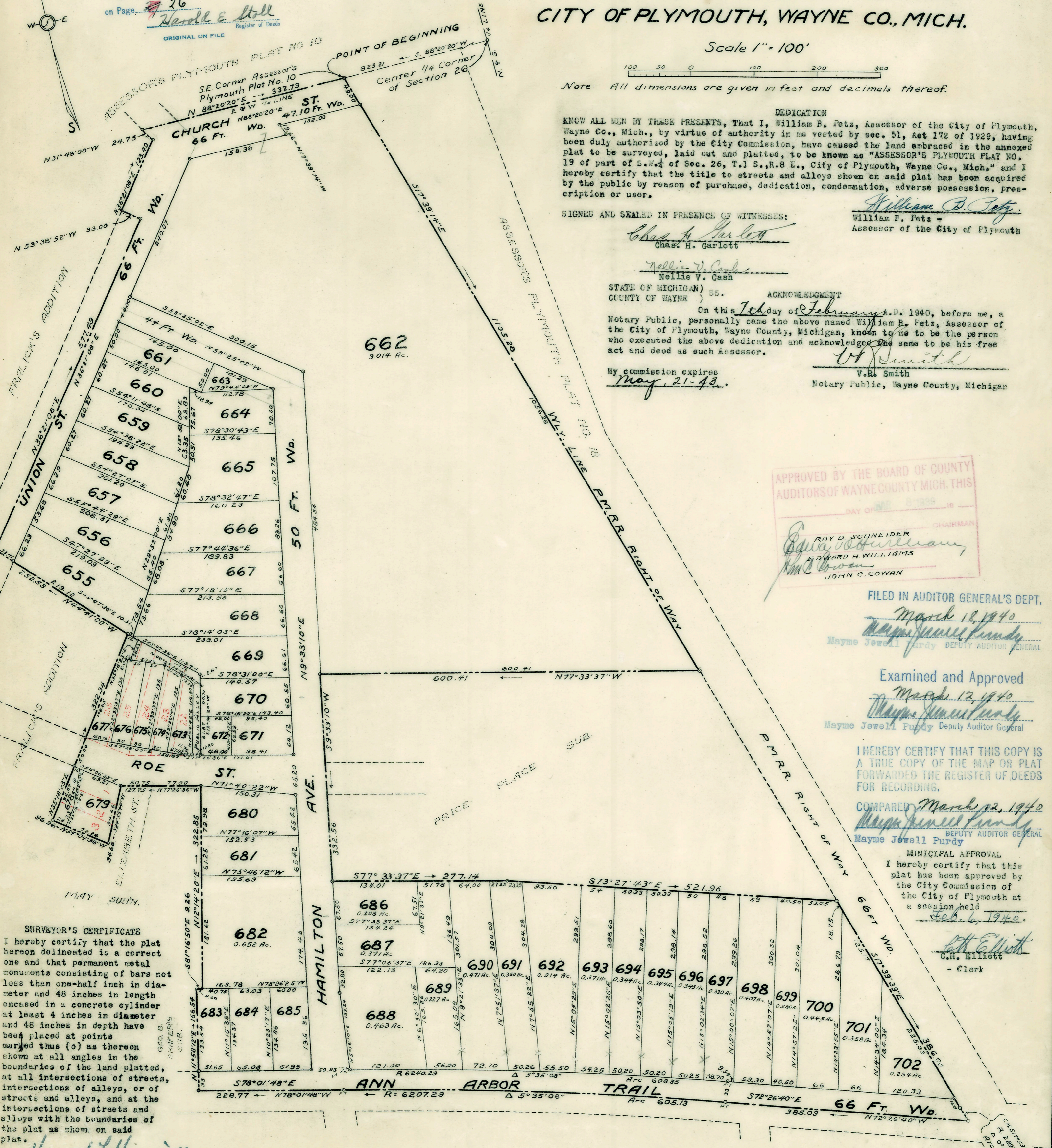
Examined and Approved  
March 12, 1940  
*Mayme Jewell Purdy*  
Mayme Jewell Purdy  
DEPUTY AUDITOR GENERAL

I HEREBY CERTIFY THAT THIS COPY IS  
A TRUE COPY OF THE MAP OR PLAT  
FORWARDED THE REGISTER OF DEEDS  
FOR RECORDING.

COMPARED March 12, 1940  
*Mayme Jewell Purdy*  
Mayme Jewell Purdy  
DEPUTY AUDITOR GENERAL

**MUNICIPAL APPROVAL**  
I hereby certify that this  
plat has been approved by  
the City Commission of  
the City of Plymouth at  
a session held  
Feb. 6, 1940.

*C.H. Elliott*  
C.H. Elliott  
- Clerk



**SURVEYOR'S CERTIFICATE**  
I hereby certify that the plat hereon delineated is a correct one and that permanent metal monuments consisting of bars not less than one-half inch in diameter and 48 inches in length encased in a concrete cylinder at least 4 inches in diameter and 48 inches in depth have been placed at points marked thus (o) as thereon shown at all angles in the boundaries of the land platted, at all intersections of streets, intersections of alleys, or of streets and alleys, and at the intersections of streets and alleys with the boundaries of the plat as shown on said plat.

*Harold E. Hamill*  
Harold E. Hamill  
Registered Land Surveyor

**DESCRIPTION**  
The land embraced in the annexed "Assessor's Plymouth Plat No. 19, being a replat of Lots 1, 2, 3 and 22 to 26 inclusive of T. P. May's Addition, and part of S.W. 1/4 of Sec. 26, T.1 S., R.8 E., City of Plymouth, Wayne Co., Mich." is described as follows: Beginning at a point on the E. & W. 1/4 line of said section 26, distant S 86°20'20"W, 823.21 ft. from the Cen. 1/4 Cor. of said section and proceeding thence along the W. 1/4 line of the P.M.R.R. right-of-way, S 17°39'14"E, 1105.28 ft.; thence along the boundaries of Price Place Subdivision, N 77°33'37"W, 600.41 ft., S 9°33'10"W, 332.56 ft., S 77°33'37"E, 277.14 ft., and S 73°27'43"E, 521.96 ft.; thence along the W. 1/4 line of said R.R. right-of-way, S 17°39'39"E, 386.00 ft., and on a tangent curve to the left of radius 2897.94 ft., central angle 0°28'08", an arc distance of 23.71 ft.; thence along the center line of Ann Arbor Trail, N 72°26'40"W, 385.09 ft., on a tangent curve to the left of radius 6207.29 ft., central angle 5°35'08", an arc distance of 605.13 ft., and tangent to said curve, N 78°01'48"W, 228.77 ft.; thence along the E. 1/4 boundary of Geo. B. Shafer's Sub., N 11°58'12"E, 166.54 ft.; thence along the boundaries of May Subdivision, S 81°16'50"E, 9.26 ft., N 12°14'20"E, 322.85 ft., N 77°26'36"W, 127.75 ft., S 24°55'44"W, 94.66 ft., and N 54°04'38"W, 96.26 ft.; thence along the boundaries of Fralick's Addition, N 35°18'23"E, 322.34 ft., N 44°41'00"W, 252.53 ft., along the center line of Union St., N 36°21'08"E, 577.49 ft., and N 53°38'52"W, 33.00 ft.; thence along the boundaries of Assessor's Plymouth Plat No. 10, N 36°21'08"E, 123.40 ft., N 31°48'00"W, 24.75 ft., and along the E. & W. 1/4 line of said section 26, N 86°20'20"E, 332.79 ft. to the point of beginning.

APPROVED BY THE  
BOARD OF COUNTY ROAD COMMISSIONERS  
OF THE COUNTY OF WAYNE, MICHIGAN  
*John Brining*  
John Brining  
MAN  
DATE MARCH 5TH 1940