

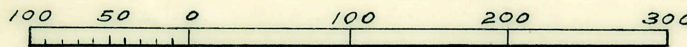
Office
Wayne County, ss.
Plat of Assessor's Plymouth
Plat No. 18, City of Plymouth
was recorded this 16 day of
Mar. A.D., 1940 at 9 O'clock
A.M. in Liber 2567 of Plate
on Page 27
Herald E. Hall
Register of Deeds

ASSESSOR'S PLYMOUTH PLAT NO 18

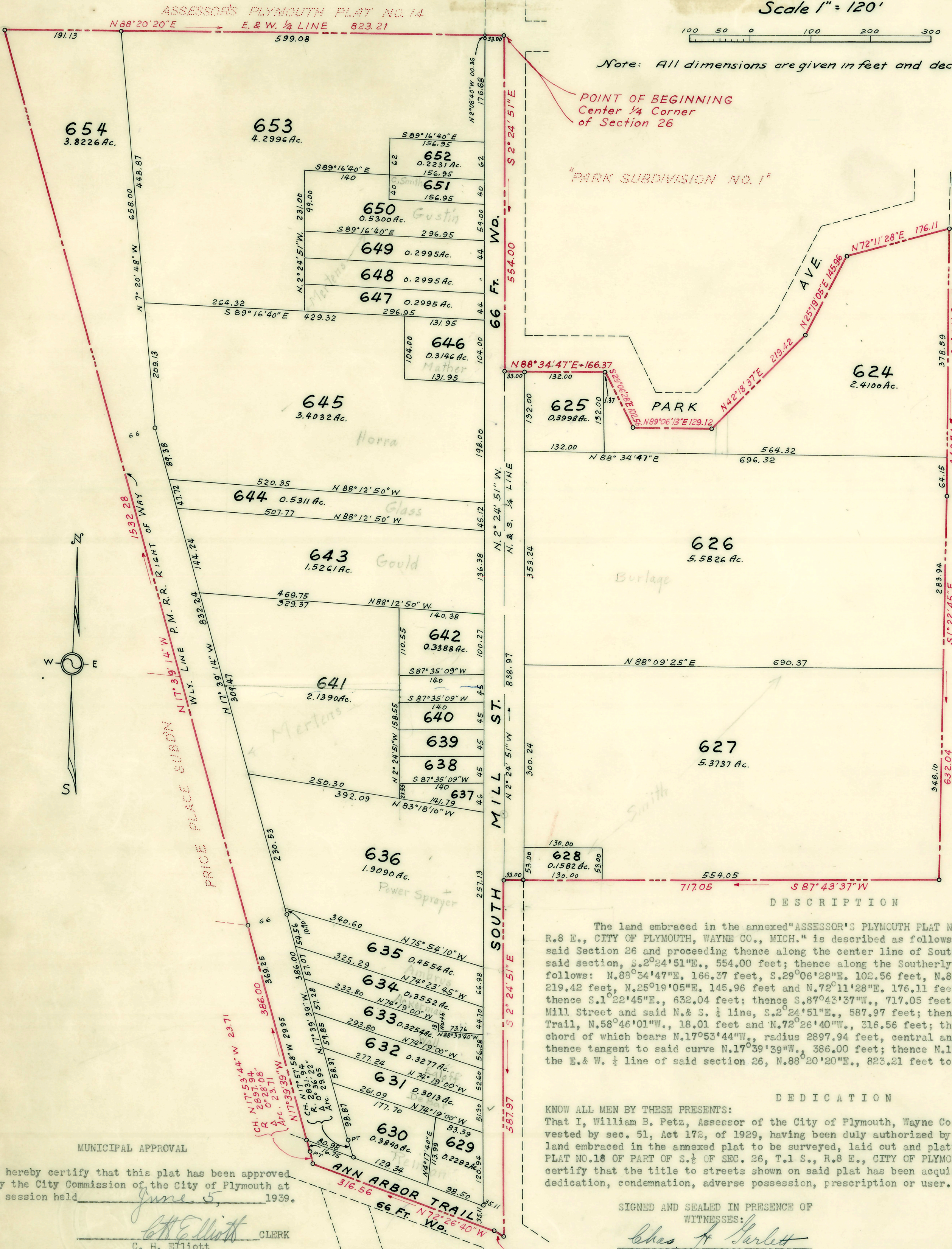
of part of S. 1/2 of Sec. 26, T.1S., R.8 E.

CITY OF PLYMOUTH, WAYNE CO., MICH.

Scale 1" = 120'



Note: All dimensions are given in feet and decimals thereof.



Examined and Approved
March 12, 1940
Mayne Jewell Purdy
Deputy Auditor General

I HEREBY CERTIFY THAT THIS COPY IS
A TRUE COPY OF THE MAP OR PLAT
FORWARDED THE REGISTER OF DEEDS
FOR RECORDING.
March 22, 1940
Mayne Jewell Purdy
DEPUTY AUDITOR GENERAL

FILED IN AUDITOR GENERAL'S DEPT.
March 18, 1940
Mayne Jewell Purdy
DEPUTY AUDITOR GENERAL

APPROVED BY THE
BOARD OF COUNTY ROAD COMMISSIONERS
THE COUNTY OF WAYNE, MICHIGAN
John Spring
CHAIRMAN
DATE MARCH 5TH 1940

APPROVED BY THE BOARD OF COUNTY
AUDITORS OF WAYNE COUNTY, MICH.
RAY D. SCHNEIDER
EDWARD H. WILLIAMS
JOHN C. COWAN

DESCRIPTION
The land embraced in the annexed "ASSESSOR'S PLYMOUTH PLAT NO. 18 OF PART OF S. 1/2 OF SEC. 26, T.1 S., R.8 E., CITY OF PLYMOUTH, WAYNE CO., MICH." is described as follows: Beginning at the center 1/4 corner of said Section 26 and proceeding thence along the center line of South Mill Street and the N. & S. 1/4 line of said section, S. 2° 24' 51" E., 554.00 feet; thence along the southerly boundary of Park Subdivision No. 1, as follows: N. 88° 34' 47" E., 166.27 feet, S. 29° 06' 28" E., 102.56 feet, N. 89° 06' 13" E., 129.12 feet, N. 42° 18' 37" E., 219.42 feet, N. 25° 19' 05" E., 145.96 feet and N. 72° 11' 28" E., 176.11 feet; thence S. 1° 44' 50" E., 442.74 feet; thence S. 1° 22' 45" E., 632.04 feet; thence S. 87° 43' 37" W., 717.05 feet; thence along the center line of South Mill Street and said N. & S. 1/4 line, S. 2° 24' 51" E., 587.97 feet; thence along the center line of Ann Arbor Trail, N. 58° 46' 01" W., 18.01 feet and N. 72° 26' 40" W., 316.56 feet; thence on a curve concave to the East, the chord of which bears N. 17° 53' 44" W., radius 2897.94 feet, central angle 0° 28' 08", arc distance 23.71 feet; thence tangent to said curve N. 17° 39' 39" W., 386.00 feet; thence N. 17° 39' 14" W., 1532.28 feet; thence along the E. & W. 1/4 line of said section 26, N. 88° 20' 20" E., 823.21 feet to the point of beginning.

DEDICATION
KNOW ALL MEN BY THESE PRESENTS:
That I, William B. Petz, Assessor of the City of Plymouth, Wayne Co., Mich., by virtue of authority in me vested by sec. 51, Act 172, of 1929, having been duly authorized by the City Commission, have caused the land embraced in the annexed plat to be surveyed, laid out and platted, to be known as "ASSESSOR'S PLYMOUTH PLAT NO. 18 OF PART OF S. 1/2 OF SEC. 26, T.1 S., R.8 E., CITY OF PLYMOUTH, WAYNE CO., MICH." and I hereby certify that the title to streets shown on said plat has been acquired by the public by reason of purchase, dedication, condemnation, adverse possession, prescription or user.

SIGNED AND SEALED IN PRESENCE OF
WITNESSES:
Chas. H. Garlett
Chas. H. Garlett.
Rosemary J. Lyke
Rosemary J. Lyke.
William B. Petz
William B. Petz
Assessor of the City of Plymouth L.S.

ACKNOWLEDGMENT
STATE OF MICHIGAN) ss.
COUNTY OF WAYNE)
On this 6th day of June 1939, before me, a Notary Public, personally came the above named William B. Petz, Assessor of the City of Plymouth, Wayne County, Michigan, known to me to be the person who executed the above dedication and acknowledged the same to be his free act and deed as such Assessor.
Chas. J. Thumma
Notary Public, in and for Wayne County, Michigan. My commission expires Dec 28 1940

MUNICIPAL APPROVAL
I hereby certify that this plat has been approved by the City Commission of the City of Plymouth at a session held June 5, 1939.
C. H. Elliott
CLERK

SURVEYOR'S CERTIFICATE
I hereby certify that the plat hereon delineated is a correct one and that permanent metal monuments of not less than one inch in diameter and forty-eight inches in length set in concrete bases at least four inches in diameter and forty-eight inches in depth have been placed at points marked thus (o) as thereon shown at all angles in the boundaries of the land platted, at all the intersections of streets, intersections of alleys, or of streets and alleys, and at the intersections of streets and alleys with the boundaries of the plat.
Herald F. Hamill
Herald F. Hamill
Registered Land Surveyor