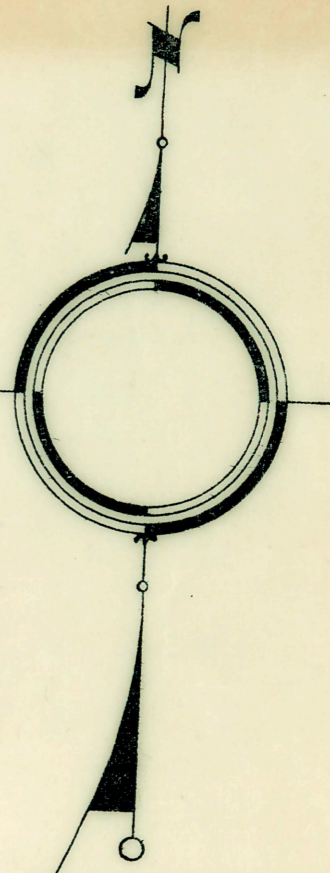


ASSESSOR'S PLYMOUTH PLAT No 11

of part of S.W. 1/4 of N.E. 1/4 of Section 26, T.1.S.R.8E.

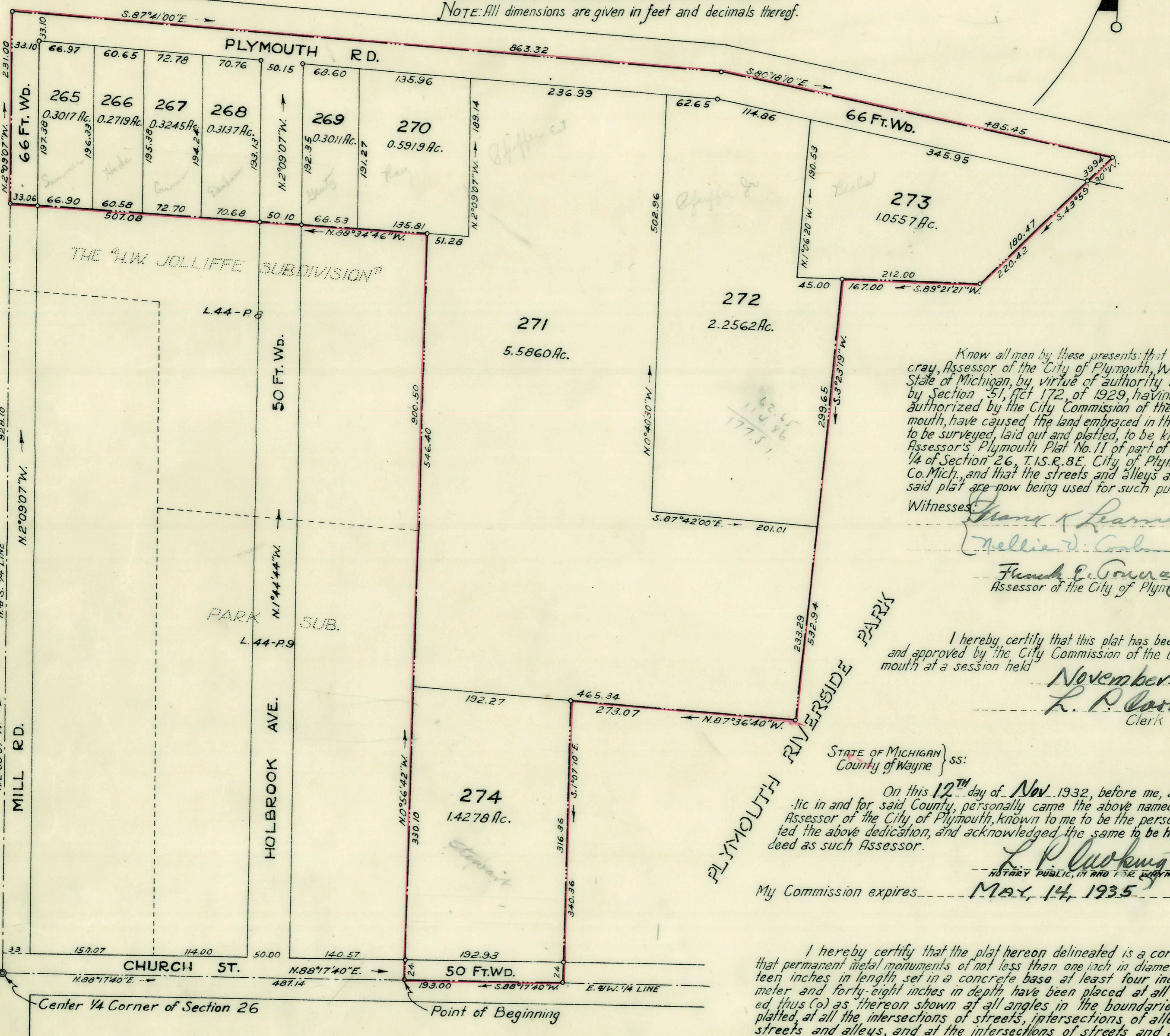
CITY OF PLYMOUTH
WAYNE CO. MICH.

Jan 19-1933
J. Tomczak



SCALE: 1" = 100'
NOTE: All dimensions are given in feet and decimals thereof.

NORTH MAIN ST.



Know all men by these presents: that I, Frank Tomczak, Assessor of the City of Plymouth, Wayne County, State of Michigan, by virtue of authority in me vested by Section 51, Act 172, of 1929, having been duly authorized by the City Commission of the City of Plymouth, have caused the land embraced in the annexed plat to be surveyed, laid out and platted, to be known as Assessor's Plymouth Plat No. 11 of part of S.W. 1/4 of N.E. 1/4 of Section 26, T.1.S.R.8E, City of Plymouth Wayne Co. Mich., and that the streets and alleys as shown on said plat are now being used for such purposes.

Witnesses:
Frank E. Tomczak (Assessor)
William D. Cook

I hereby certify that this plat has been authorized and approved by the City Commission of the City of Plymouth at a session held
November 7, 1932
L. P. Cookingham
Clerk

STATE OF MICHIGAN } ss:
County of Wayne }
On this 12th day of Nov. 1932, before me, a Notary Public in and for said County, personally came the above named Frank Tomczak, Assessor of the City of Plymouth, known to me to be the person who executed the above dedication, and acknowledged the same to be his free act and deed as such Assessor.
L. P. Cookingham
NOTARY PUBLIC, IN AND FOR WAYNE COUNTY, MICH.
My Commission expires MAY 14, 1935

I hereby certify that the plat hereon delineated is a correct one and that permanent metal monuments of not less than one inch in diameter and fifteen inches in length, set in a concrete base at least four inches in diameter and forty-eight inches in depth have been placed at all points marked thus (o) as thereon shown at all angles in the boundaries of the land platted, at all the intersections of streets, intersections of alleys, or of streets and alleys, and at the intersections of streets and alleys with the boundaries of the plat as shown on said plat.

Henry T. Kewba
Registered Surveyor

DESCRIPTION
The land embraced in the annexed plat of Assessor's Plymouth Plat No. 11 of part of S.W. 1/4 of N.E. 1/4 of Section 26, T.1.S.R.8E, City of Plymouth Wayne Co. Mich. is described as follows: Beginning at a point on the East and West 1/4 line of said Section, distant N. 88° 17' 40" E. 487.14 ft. from the center 1/4 corner of said Section, and running thence along the east lines of Park Sub. and The "H.W. Jolliffe Subdivision" respectively, N. 0° 56' 42" W. 900.50 ft. to a point; thence along the northerly line of said last mentioned Subdivision N. 88° 34' 42" W. 507.08 ft. to a point; thence along the S. 1/4 line of said Section N. 2° 09' 07" W. 231.00 ft. to a point; thence along the center line of Plymouth Rd. S. 87° 41' 00" E. 863.32 ft. to a point; thence continuing along said center line S. 80° 18' 10" E. 485.45 ft. to a point; thence along the westerly boundary of Plymouth Riverside Park as follows: - S. 43° 59' 30" W. 220.42 ft. to a point, S. 89° 21' 21" W. 167.00 ft. to a point, S. 3° 23' 19" W. 532.94 ft. to a point, N. 87° 36' 40" W. 273.07 ft. to a point, and S. 1° 07' 10" E. 340.36 ft. to a point; thence along the E. 1/4 W. 1/4 line of said Section S. 88° 17' 40" W. 193.00 ft. to the point of beginning.

APPROVED BY THE BOARD OF COUNTY AUDITORS OF WAYNE COUNTY MICH. THIS

James D. Cook
John A. Cowan

Assessor's Plymouth Plat No. 11
Jan 19-1933
J. Tomczak
Feb 2-1933
J. Tomczak
Harold C. Stall