

# ASSESSOR'S PLYMOUTH PLAT NO 8

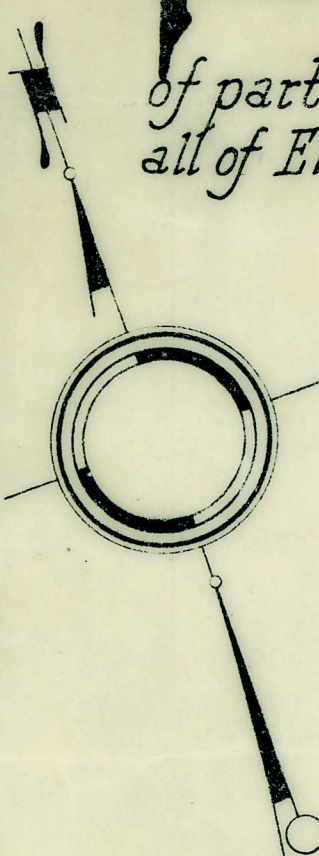
of part of the S.W. 1/4 of Sec. 26, part of the S.E. 1/4 of Sec. 27, and all of Ella Safford's Sub. of part of said Secs. 26 and 27, T.1.S.R.8E.

PLYMOUTH VILLAGE

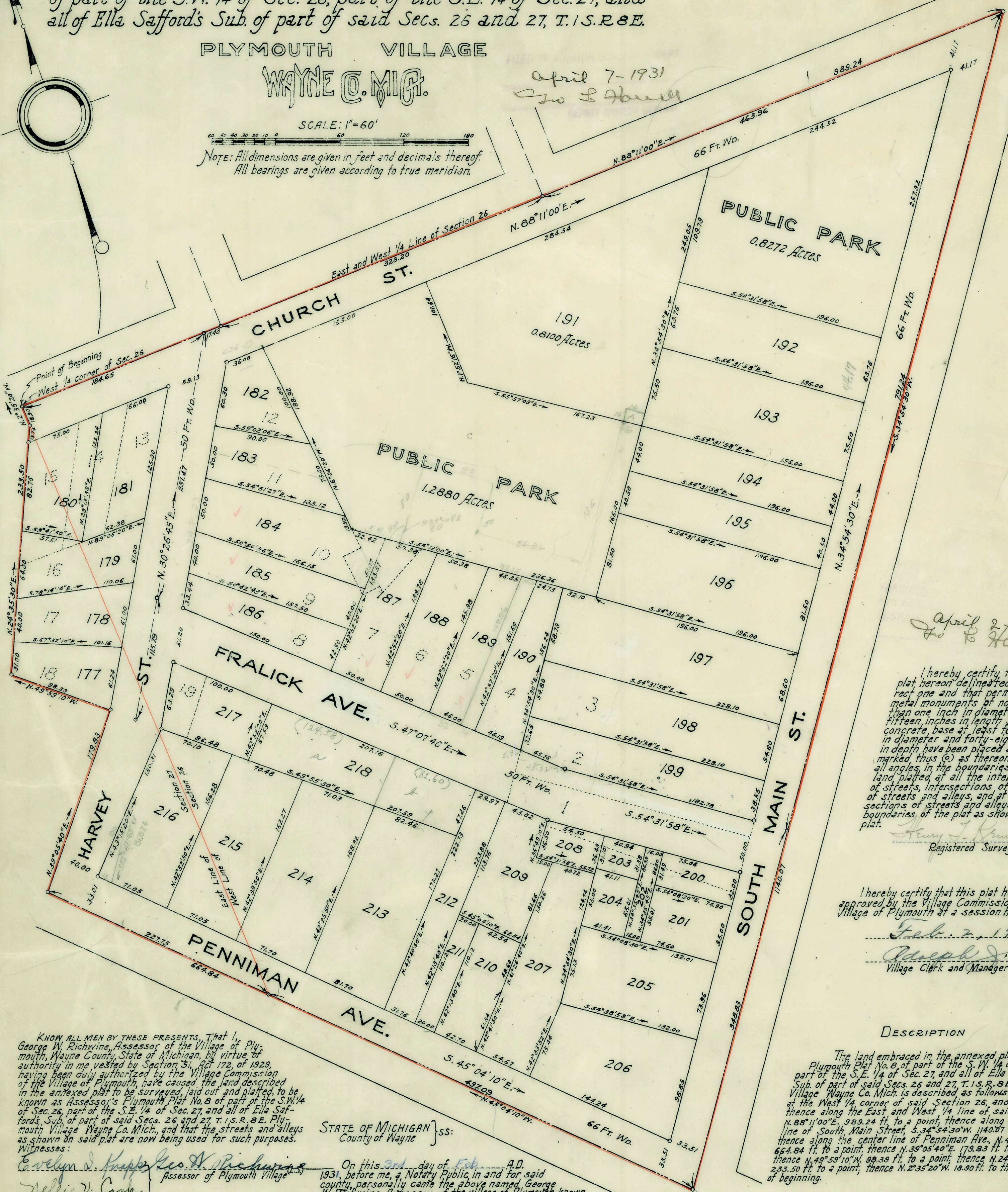
WAYNE CO. MICH.

April 2-1931  
Geo L Harvey

April 7-1931  
Geo L Harvey



SCALE: 1"=60'  
Note: All dimensions are given in feet and decimals thereof. All bearings are given according to true meridian.



April 27 1931  
Geo L Harvey  
I hereby certify that the plat hereon delineated is a correct one and that permanent metal monuments of not less than one inch in diameter and fifteen inches in length set in a concrete base at least four inches in diameter and forty-eight inches in depth have been placed at points marked thus (C) as thereon shown at all angles in the boundaries of the land platted at all the intersections of streets, intersections of alleys, or of streets and alleys, and at the intersections of streets and alleys with the boundaries of the plat as shown on said plat.  
Henry J. Krumba  
Registered Surveyor

I hereby certify that this plat has been approved by the Village Commission of the Village of Plymouth at a session held  
Feb. 2, 1931  
Joseph J. Harvey  
Village Clerk and Manager

DESCRIPTION  
The land embraced in the annexed plat of Assessors Plymouth Plat No 8, of part of the S.W. 1/4 of Sec. 26, part of the S.E. 1/4 of Sec. 27, and all of Ella Safford's Sub. of part of said Secs. 26 and 27, T.1.S.R.8E. Plymouth Village Wayne Co. Mich. is described as follows: Beginning at the West 1/4 corner of said Section 26, and running thence along the East and West 1/4 line of said Section, N. 88° 11' 00" E., 989.24 ft. to a point; thence along the center line of South Main Street, S. 34° 34' 30" W., 1140.07 ft. to a point; thence along the center line of Penniman Ave., N. 45° 04' 10" W., 664.84 ft. to a point; thence N. 39° 05' 40" E., 179.83 ft. to a point; thence N. 49° 55' 10" W., 99.39 ft. to a point; thence N. 24° 35' 30" E., 233.50 ft. to a point; thence N. 2° 35' 20" W., 18.90 ft. to the point of beginning.

KNOW ALL MEN BY THESE PRESENTS, that I, George W. Richwine, Assessor of the Village of Plymouth, Wayne County, State of Michigan, by virtue of authority in me vested by Section 31, Act 172, of 1929, having been duly authorized by the Village Commission of the Village of Plymouth, have caused the land described in the annexed plat to be surveyed, laid out and platted to be known as Assessor's Plymouth Plat No 8 of part of the S.W. 1/4 of Sec. 26, part of the S.E. 1/4 of Sec. 27, and all of Ella Safford's Sub. of part of said Secs. 26 and 27, T.1.S.R.8E. Plymouth Village Wayne Co. Mich., and that the streets and alleys as shown on said plat are now being used for such purposes.  
Witnesses:  
Evelyn J. Kupper, Geo. A. Richwine  
Assessor of Plymouth Village

STATE OF MICHIGAN } ss:  
County of Wayne }  
On this 3rd day of Feb. A.D. 1931, before me, a Notary Public, in and for said county, personally came the above named, George W. Richwine, Assessor of the village of Plymouth, known to me to be the person who executed the above dedication, and acknowledged the same to be his free act and deed as such assessor.  
Notary Public, in and for Wayne County, Michigan

APPROVED BY THE BOARD OF COUNTY AUDITORS OF WAYNE COUNTY MICH. THIS  
5th DAY OF Feb. 1931  
CHAIRMAN  
Geo L Harvey

Hand  
assessors  
Plymouth  
Apr. 31 1930  
a 78  
Plat  
with Stoll