

ASSESSOR'S PLYMOUTH PLAT NO 5

Mar 4-1930
To L. Hauer

of Part of N.W. 1/4 of Section 26, T.1 S.R. 8 E.

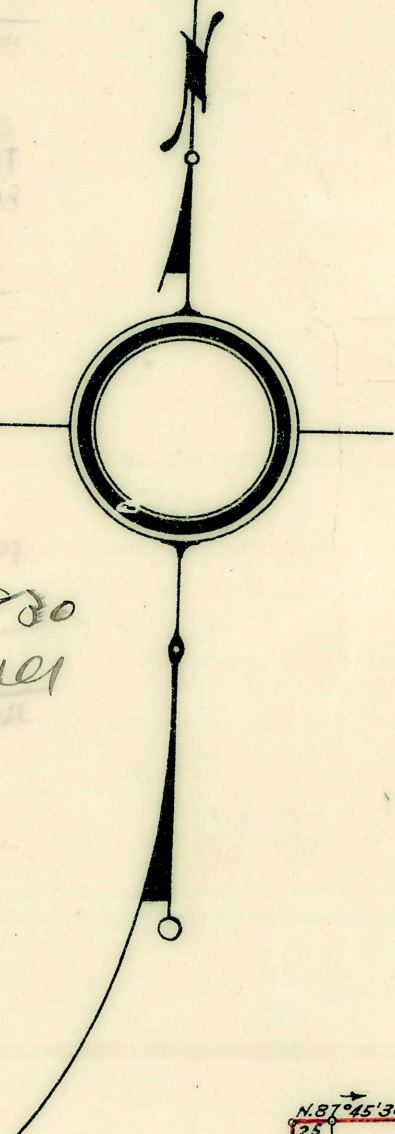
PLYMOUTH VILLAGE
WAYNE CO. MICH.

Wayne Assessor
Plymouth Plat No 5
Mar 30 11
64 Plat
27
Otto Stahl
by Arthur W. [unclear]
Survey

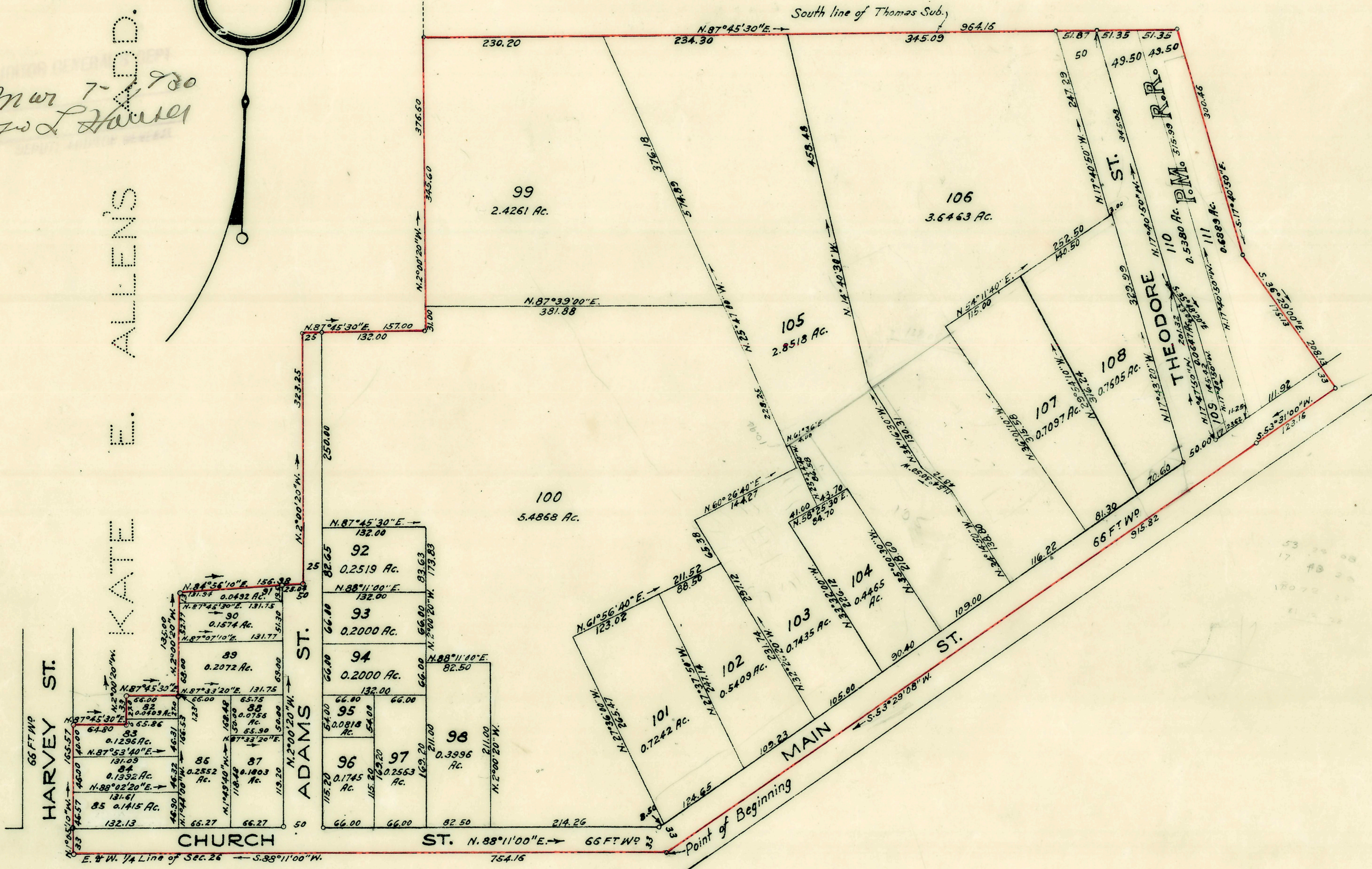
Mar 4 1930
To L. Hauer

Mar 7-1930
To L. Hauer

KATE E. ALLEN'S



SCALE: 1" = 120'
Note: All dimensions are given in feet and decimals thereof.
All bearings are given according to true meridian.



Know all men by these presents: that I, Geo. W. Richwine Assessor of Plymouth Village, Wayne County, State of Michigan, by virtue of authority in me vested by Section 51, Act 172 of 1923, having been duly authorized by the Village of Plymouth, have caused the land described in the annexed plat to be surveyed, laid out and platted, to be known as "Assessor's Plymouth Plat No 5" of part of N.W. 1/4 of Section 26, T.1 S.R. 8 E., Plymouth Village, Wayne Co. Mich. and that the streets and alleys as therein set said plat are now being used for such purposes.
Signed and sealed in the presence of:

I hereby certify that the plat hereon delineated is a correct one, and that permanent monuments consisting of 1"x15" pipes set in concrete bases 4" in diameter and 48" in depth, have been placed in the ground at all points marked thus (o) as shown thereon at all angles in the boundaries of the land platted and at all intersections of streets, of alleys or of streets and alleys or of streets or alleys with the boundaries of the plat.
Henry J. Kumba
Registered Surveyor

Witnesses:
Alice J. Pincz Geo. W. Richwine (L.S.)
John J. Cook Assessor of Plymouth Village

I hereby certify that this plat has been authorized and approved by the Village Commission at the Plymouth Village at a session held
November 18, 1929.
J. J. Roenig
Village Clerk and Manager

STATE OF MICHIGAN) ss:
COUNTY OF WAYNE)
On this 6 day of JANUARY 1930, before me, a Notary Public, personally came the above named Geo. W. Richwine known to me to be the person who executed the above dedication and acknowledged the same to be his free act and deed.
Ray S. Farrot
Notary Public in and for Wayne County, Michigan
My Commission expires June 14 1932.

DESCRIPTION
The land embraced in the annexed plat of "Assessor's Plymouth Plat No 5" of Part of N.W. 1/4 of Section 26, T.1 S.R. 8 E., Plymouth Village, Wayne Co. Mich. is described as follows: Beginning at a point at the intersection of the E. and W. 1/4 line of said Section 26, being the center line of Church Street with the center line of Main Street, and running thence along said E. and W. 1/4 line of said section, S. 88° 11' 00" W. 754.16 ft. to a point, thence along the E. line of Harvey Street N. 1° 05' 10" W. 165.57 ft. to a point, thence N. 87° 45' 30" E. 643.0 ft. to a point, thence N. 2° 00' 20" W. 33.00 ft. to a point, thence N. 87° 45' 30" E. 66.00 ft. to a point, thence N. 2° 00' 20" W. 135.00 ft. to a point, thence N. 84° 54' 10" E. 158.98 ft. to a point, thence along the center line of Adams Street, N. 2° 00' 20" W. 323.25 ft. to a point, thence N. 87° 45' 30" E. 157.00 ft. to a point, thence N. 2° 00' 20" W. 376.50 ft. to a point, thence along the South line of Thomas Subdivision, N. 87° 45' 30" E. 964.15 ft. to a point, thence along the Ely line of P.M.R.R. Right of Way, S. 17° 40' 50" E. 300.46 ft. to a point, thence continuing along the P.M.R.R. Right of Way, S. 35° 25' 00" E. 208.13 ft. to a point, thence along the center line of Main Street, S. 53° 31' 00" W. 123.16 ft. to a point, thence continuing along the center line of said Main Street, S. 53° 25' 08" W. 515.82 ft. to the point of beginning.

APPROVED BY THE BOARD OF COUNTY AUDITORS OF WAYNE COUNTY MICH. THIS
Feb. 1930
John J. Roenig CHAIRMAN
John J. Roenig
John J. Roenig