

ARBOR-CROFT SUBDIVISION

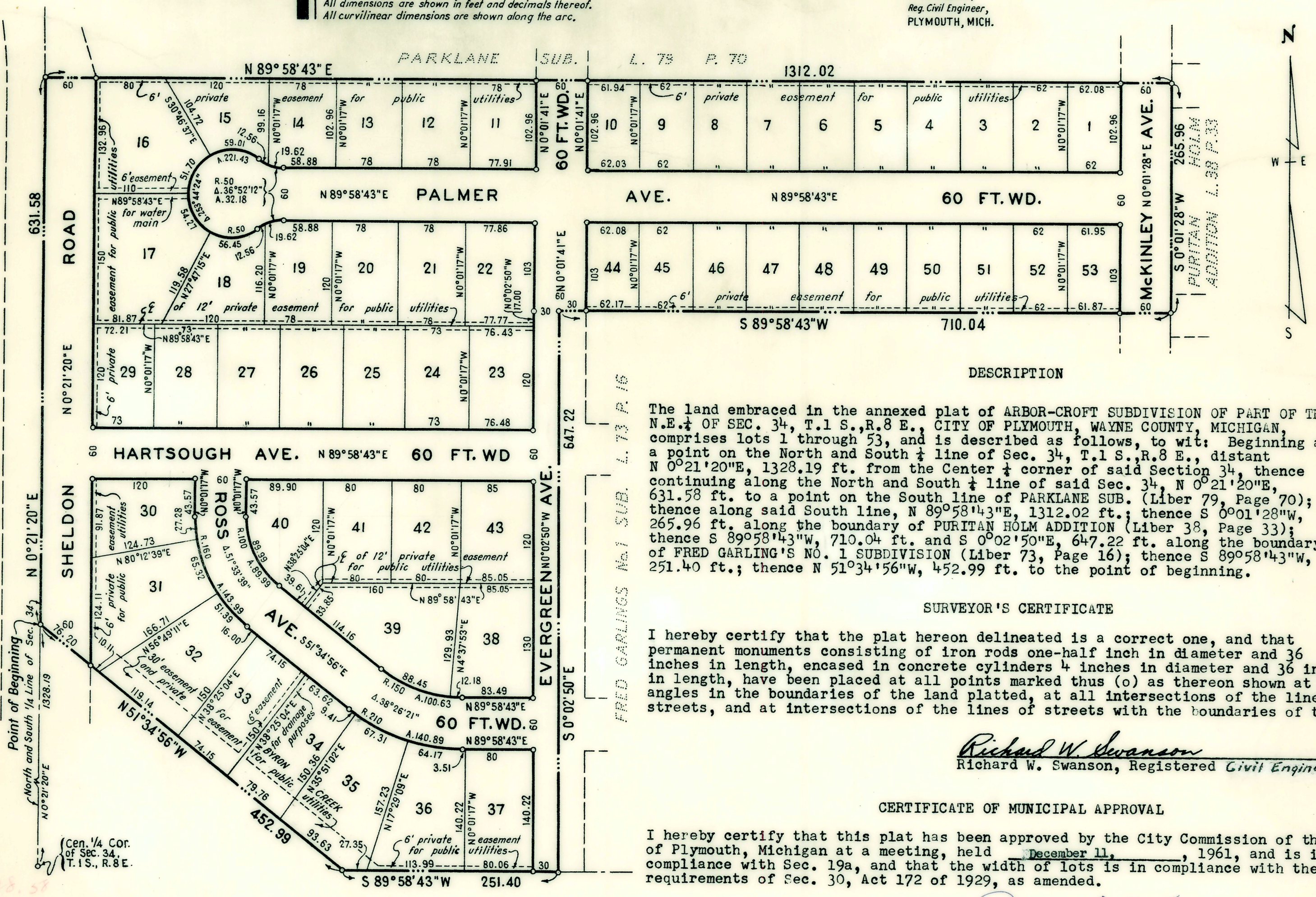
OF PART OF THE N.E. 1/4 OF SEC. 34, T.1 S., R.8 E.,

CITY OF PLYMOUTH, WAYNE COUNTY, MICHIGAN.

SCALE: ~ ONE INCH = 100 FEET.

NOTE: All dimensions are shown in feet and decimals thereof. All curvilinear dimensions are shown along the arc.

R. SWANSON,
Reg. Civil Engineer,
PLYMOUTH, MICH.



DESCRIPTION

The land embraced in the annexed plat of ARBOR-CROFT SUBDIVISION OF PART OF THE N.E. 1/4 OF SEC. 34, T.1 S., R.8 E., CITY OF PLYMOUTH, WAYNE COUNTY, MICHIGAN, comprises lots 1 through 53, and is described as follows, to wit: Beginning at a point on the North and South 1/2 line of Sec. 34, T.1 S., R.8 E., distant N 0°21'20"E, 1328.19 ft. from the Center 1/4 corner of said Section 34, thence continuing along the North and South 1/2 line of said Sec. 34, N 0°21'20"E, 631.58 ft. to a point on the South line of PARKLANE SUB. (Liber 79, Page 70); thence along said South line, N 89°58'43"E, 1312.02 ft.; thence S 0°01'28"W, 265.96 ft. along the boundary of PURITAN HOLM ADDITION (Liber 38, Page 33); thence S 89°58'43"W, 710.04 ft. and S 0°02'50"E, 647.22 ft. along the boundary of FRED GARLING'S NO. 1 SUBDIVISION (Liber 73, Page 16); thence S 89°58'43"W, 251.40 ft.; thence N 51°34'56"W, 452.99 ft. to the point of beginning.

SURVEYOR'S CERTIFICATE

I hereby certify that the plat hereon delineated is a correct one, and that permanent monuments consisting of iron rods one-half inch in diameter and 36 inches in length, encased in concrete cylinders 4 inches in diameter and 36 inches in length, have been placed at all points marked thus (o) as thereon shown at all angles in the boundaries of the land platted, at all intersections of the lines of streets, and at intersections of the lines of streets with the boundaries of the plat.

Richard W. Swanson
Richard W. Swanson, Registered Civil Engineer

CERTIFICATE OF MUNICIPAL APPROVAL

I hereby certify that this plat has been approved by the City Commission of the City of Plymouth, Michigan, at a meeting, held December 11, 1961, and is in compliance with Sec. 19a, and that the width of lots is in compliance with the requirements of Sec. 30, Act 172 of 1929, as amended.

Joseph F. Near
Joseph F. Near, City Clerk

CERTIFICATE OF PLANNING COMMISSION APPROVAL

This plat was approved by the Planning Commission of the City of Plymouth at a meeting held January 9, 1961.

Sidney D. Strong
Sidney D. Strong, Chairman
City Planning Commission

THIS IS TO CERTIFY THAT THERE ARE NO TAX LIENS OR TITLES ON THIS PROPERTY, AND THAT TAXES ARE PAID FOR FIVE YEARS PREVIOUS TO DATE OF THIS INSTRUMENT.

EXCEPT 1961 not examined

Harold E. Stoll Wayne County Treas.
DATE 1-15 1962 by *J.R. Sanson*
R. PRINCE JOSEPH R. SANSON

Approved by the Plat Board of Wayne County, Mich.
DAY OF JAN 29 1962
Bernard J. Youngblood Register of Deeds
Jacob P. Sumracki Chairman, Board of County Auditors
Arthur A. Sumracki Vice Chairman, Board of County Auditors
Chas. F. Edgcomb Secretary, Board of County Auditors
Henry V. Herrick CLERK, BOARD OF COUNTY AUDITORS

Approved as to compliance with all plat requirements of the Plat Board of Wayne Co. Mich. Jan. 23, 1962
Walter A. Lesnick County Plat Engineer

APPROVED BY THE
BOARD OF COUNTY ROAD COMMISSIONERS
OF THE COUNTY OF WAYNE, MICHIGAN
Michael J. O'Brien CHAIRMAN
DATE January 25, 1962

DEDICATION

KNOW ALL MEN BY THESE PRESENTS, That We, Gould Development Company, a Michigan corporation, by Loren W. Gould, President, and Lorraine Gould, Secretary, as Proprietor have caused the land embraced in the annexed plat to be surveyed, laid out and platted, to be known as "ARBOR-CROFT SUBDIVISION OF PART OF THE N.E. 1/4 OF SEC. 34, T.1 S., R.8 E., CITY OF PLYMOUTH, WAYNE COUNTY, MICHIGAN", and that the streets as shown on said plat are hereby dedicated to the use of the public, and that the private easements shown on said plat are hereby reserved for the use of the public utilities, or for the use of specific utilities, or specific uses, as thereon noted, subject to the regulation and control of the use thereof by the local governmental authorities, and that no permanent structures are to be erected within the boundaries of said easements.

Witnesses: GOULD DEVELOPMENT COMPANY
Nellie V. Cash By *Loren W. Gould*
Nellie V. Cash Loren W. Gould, President
Grace L. McCallum By *Lorraine Gould*
Grace L. McCallum Lorraine Gould, Secretary

ACKNOWLEDGMENT

State of Michigan)
County of Wayne) ss
On this 8th day of December, A.D., 1961, before me, a Notary Public in and for said County, appeared Loren W. Gould, and Lorraine Gould, to me personally known, who being each by me duly sworn did say that they are the President and Secretary respectively, of Gould Development Company, a Michigan corporation, and that said instrument was signed in behalf of said corporation by authority of its Board of Directors, and the said Loren W. Gould and Lorraine Gould acknowledged said instrument to be the free act and deed of said corporation.

My commission expires August 20, 1963
Maryon Bridgman
Maryon Bridgman
Notary Public, Wayne County, Michigan

Register's Office
Wayne County
Plat of
Arbor-Croft Subdivision
was Recorded this 30th day of
January A.D., 1962 at 2:12 o'clock
P.M. in Lib. 85 of Plat
on Page 92
Ray H. Woodcock
Register of Deeds

I hereby certify this copy is a true copy of map or plat forwarded the Register of deeds for recording.
Date January 30, 1962
FILED IN AUDITOR GENERAL'S DEPT.
Date February 2, 1962
EXAMINED AND APPROVED
Date January 30, 1962
Billie S. Farnum
BILLIE S. FARNUM
AUDITOR GENERAL
By *Richard E. Lomas*
Richard E. Lomas - Plat Examiner

"Arborcroft Subdivision"